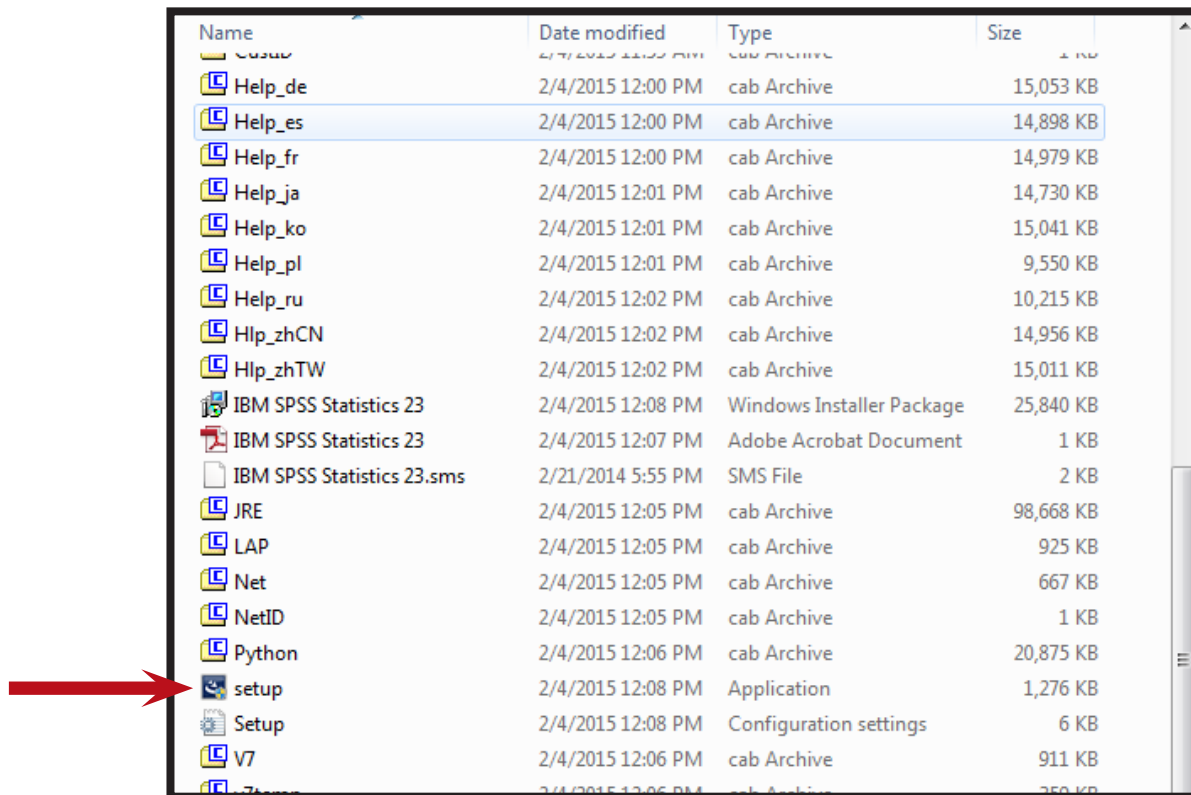




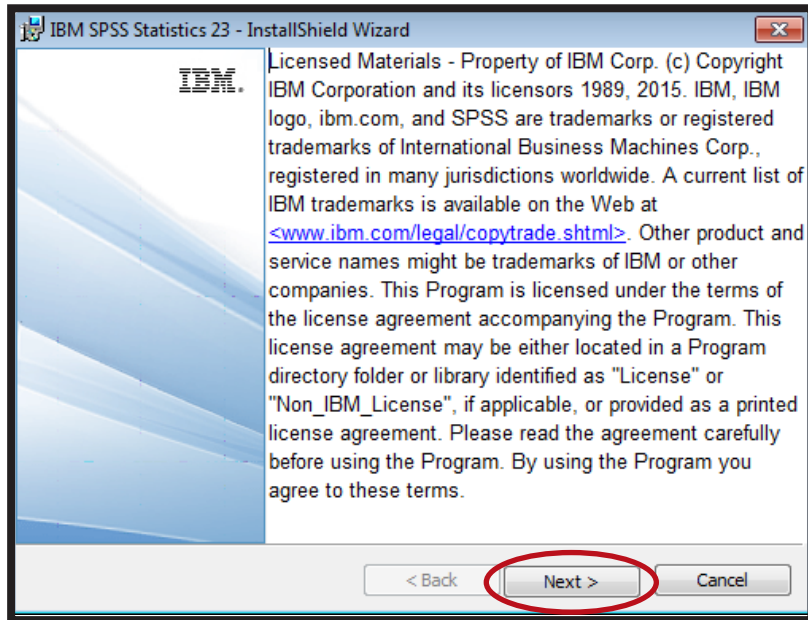
Installation Instructions for SPSS 23

To install SPSS 23 for Windows, insert and open the SPSS 23 flash drive and open either the 32-bit or 64-bit folder (depending on your system configuration). If you downloaded SPSS 23 from the ITS website, open the zip folder.

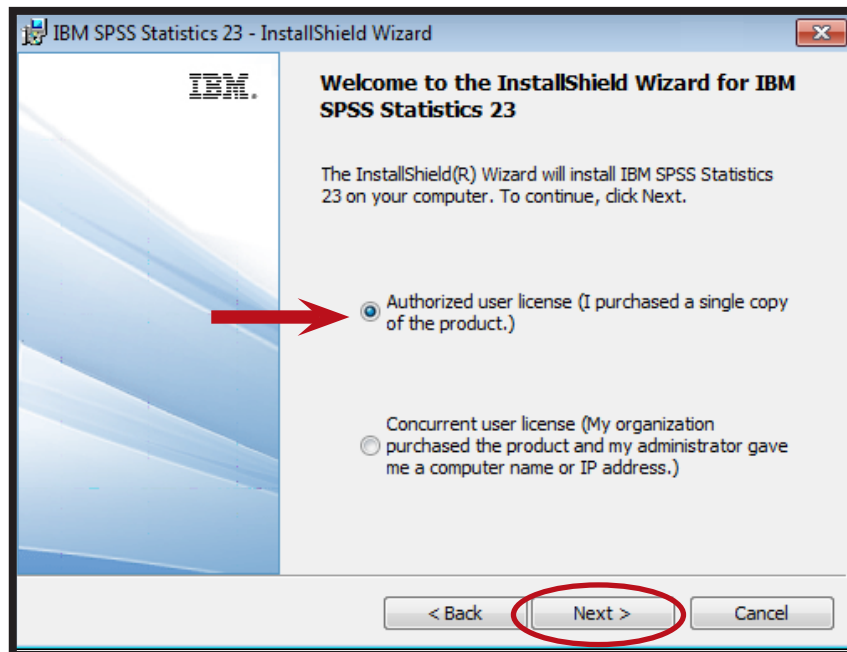
1. To begin the installation, double-click the **Setup** application file.



2. Click **Next** when the initial installer window appears.

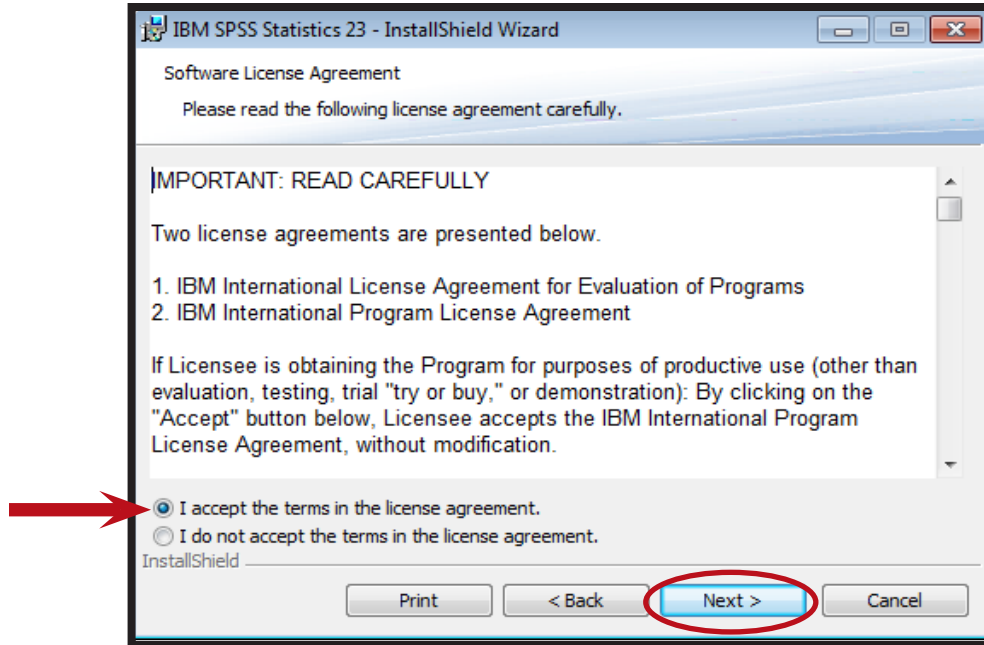


3. On this window, select **Authorized user license (I purchased a single copy of the product)** and click .

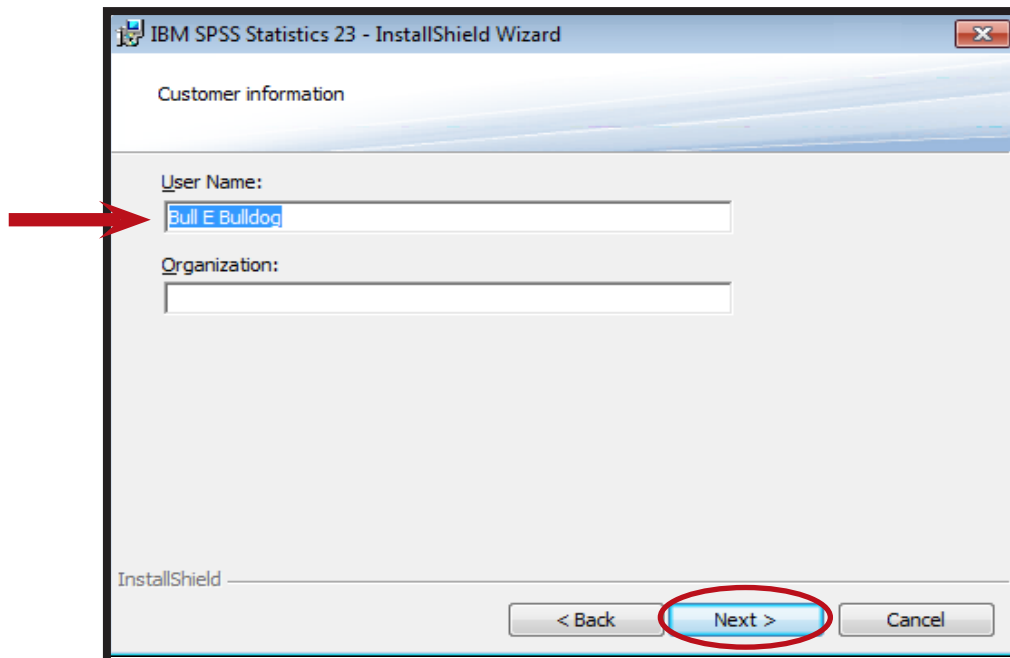




4. In the **Software License Agreement** window, click **I accept the terms in the license agreement**. Then click **Next**.

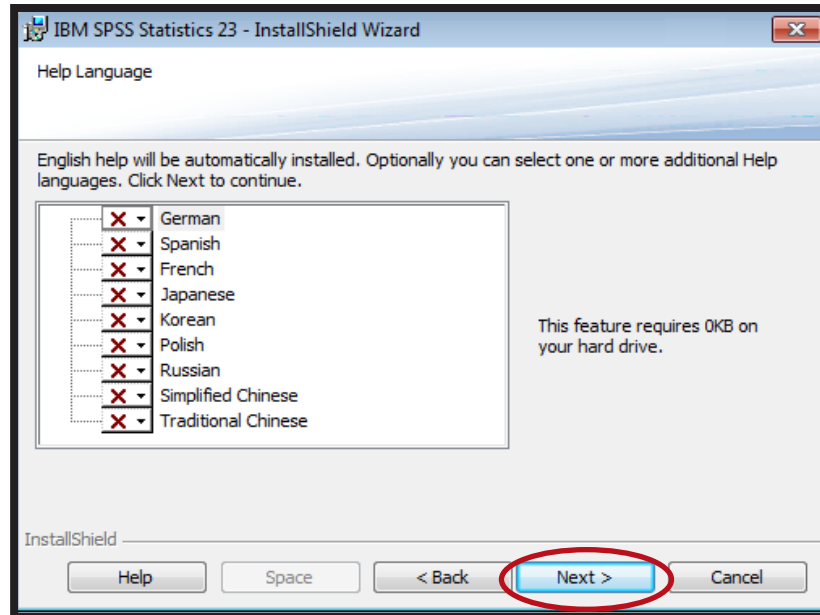


5. In the **Customer information** window, enter your information, and then click **Next**.

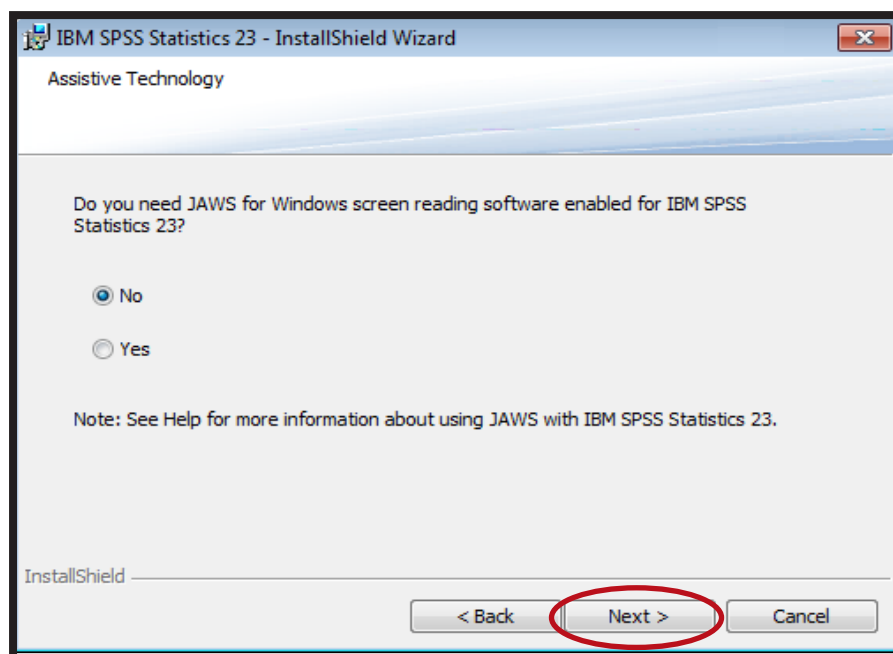




6. In the **Help Language** window, click **Next**. (English is installed automatically. If you need another language for Help, you can select it)

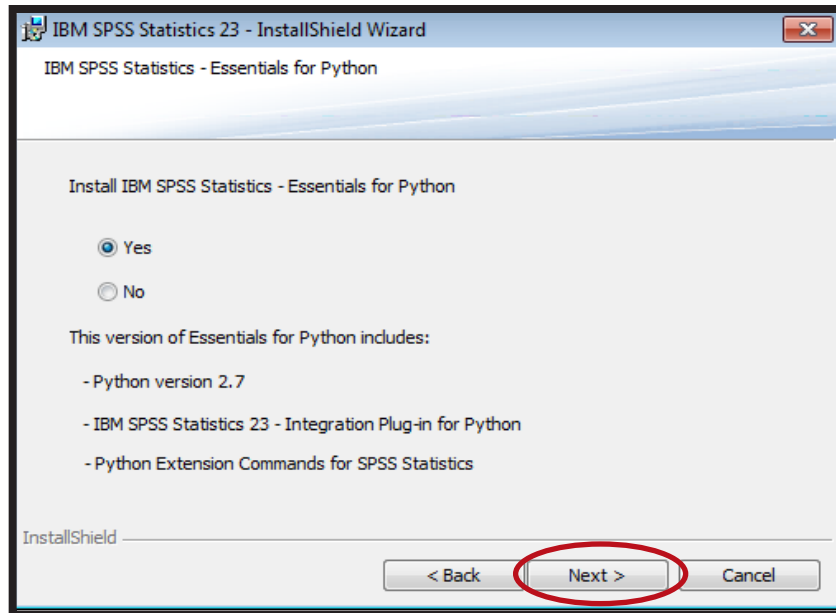


7. In the **Assistive Technology** window, if you need JAWS for Windows enabled, choose Yes and click Next. If not, choose No and then click Next.

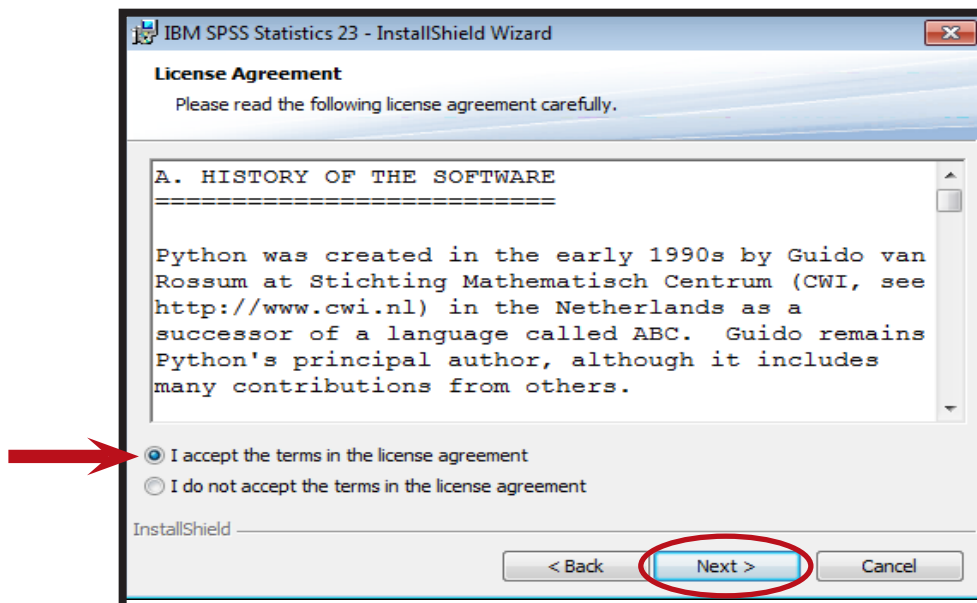




8. In the **IBM SPSS Statistics -Essentials for Python** window, you can choose whether you need to install Python or not. After choosing, click **Next**.

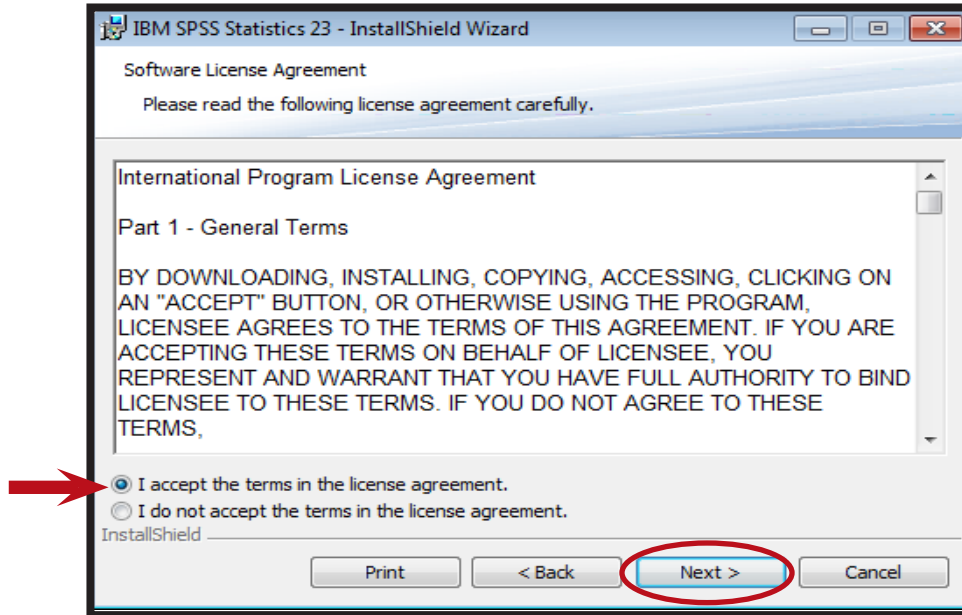


9. In the **License Agreement** window, click **I accept the terms in the license agreement** and click **Next**.

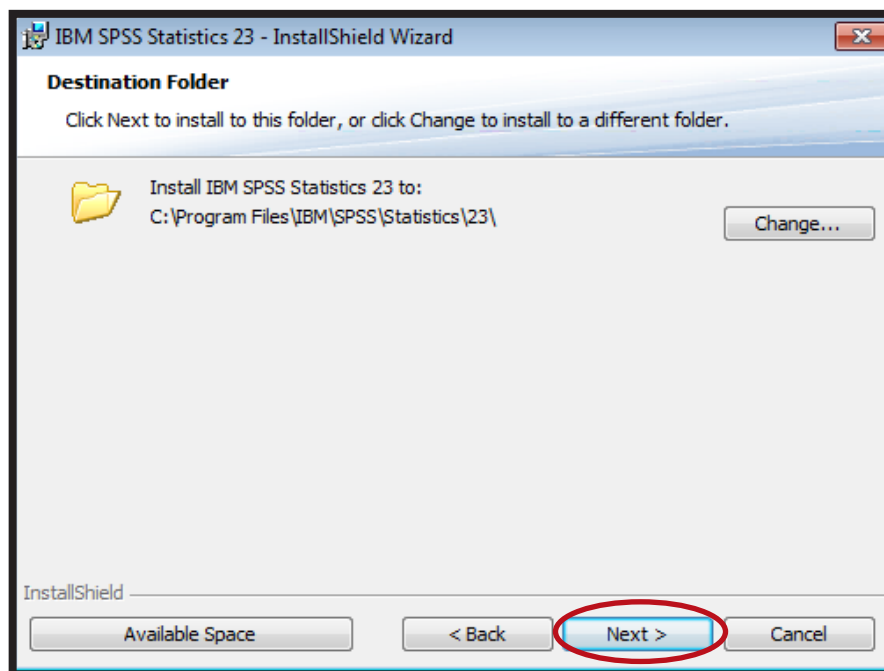




10. In the **Software License Agreement** window, click **I accept the terms in the license agreement** and click **Next**.

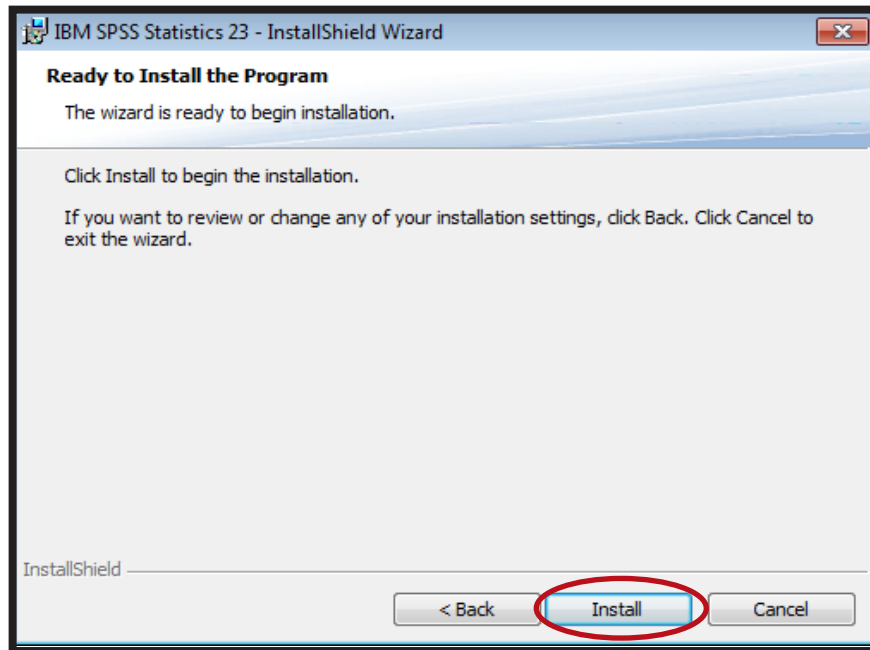


11. In the **Destination Folder** window, click **Next**.

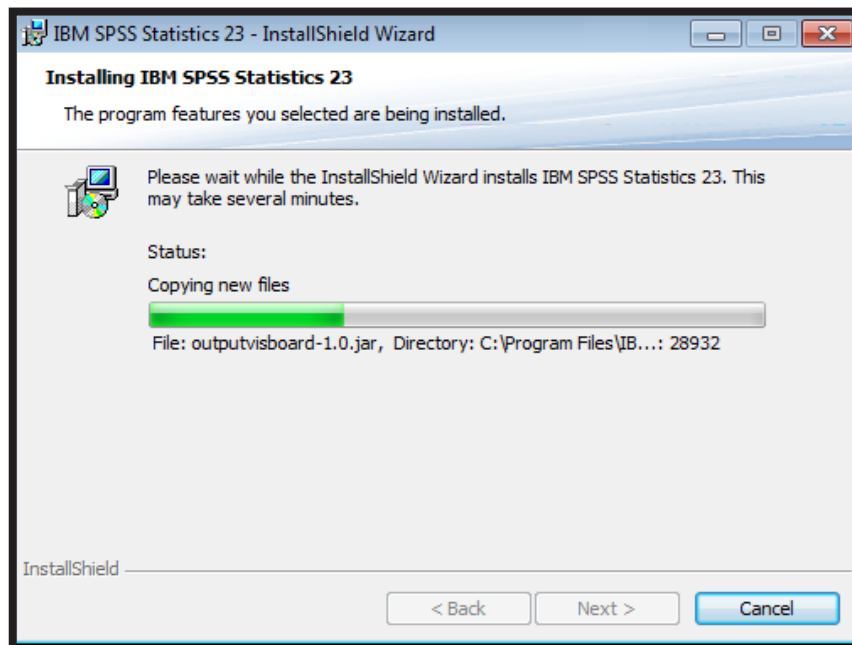




12. In the **Ready to Install the Program** window, click **Install**.

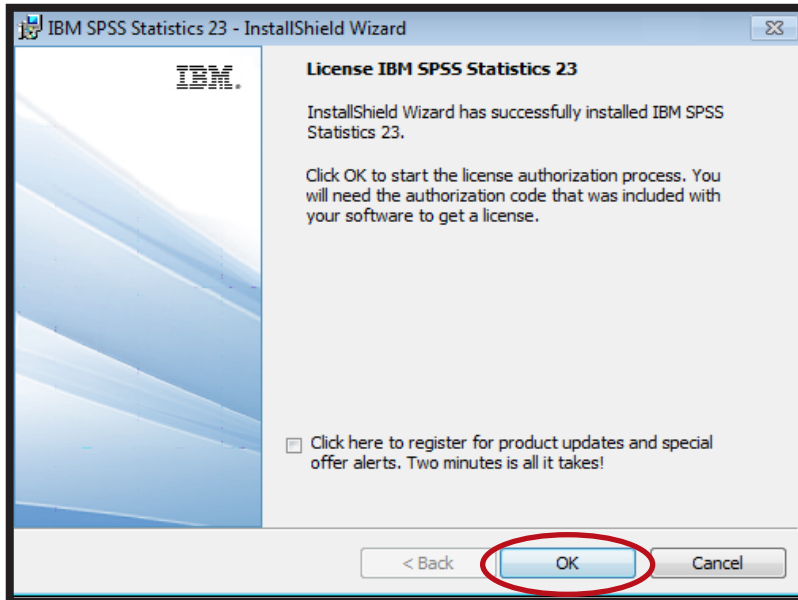


13. You should now see SPSS 23 being installed.

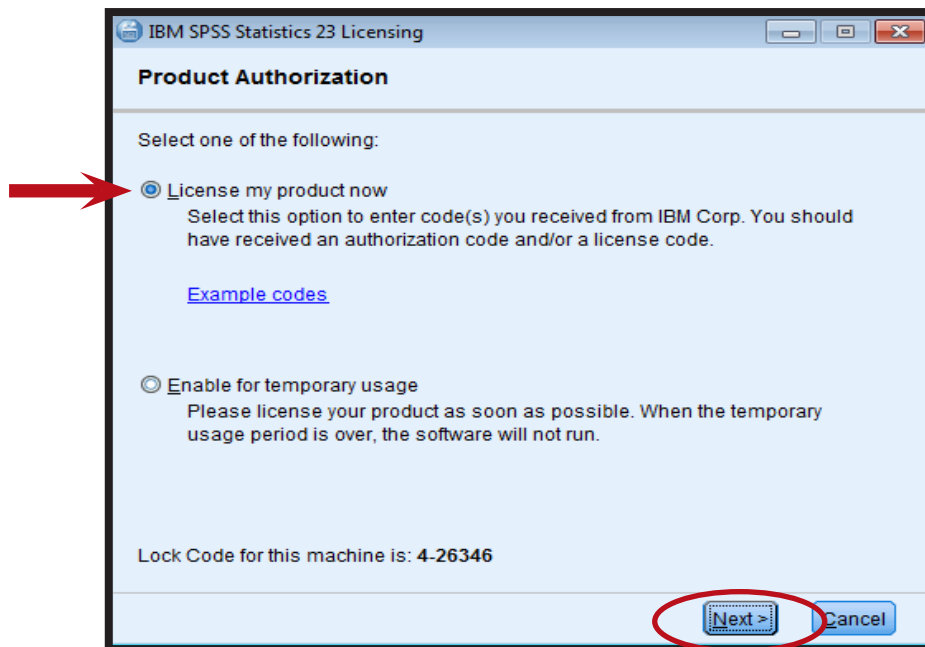




14. In the **License IBM SPSS Statistics 23** window, click **OK**.

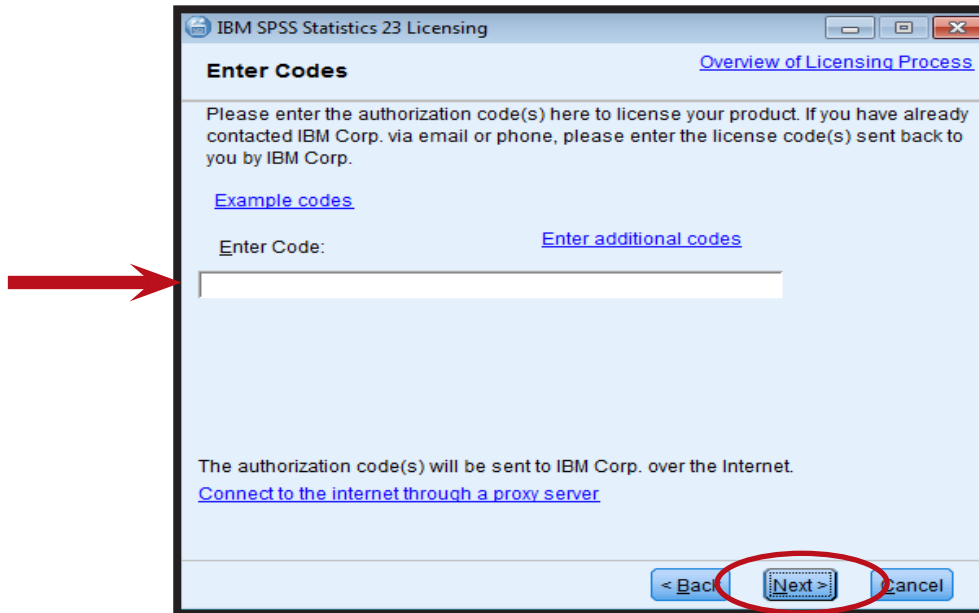


15. In the **Product Authorization** window, select **License my product now** and click **Next**.

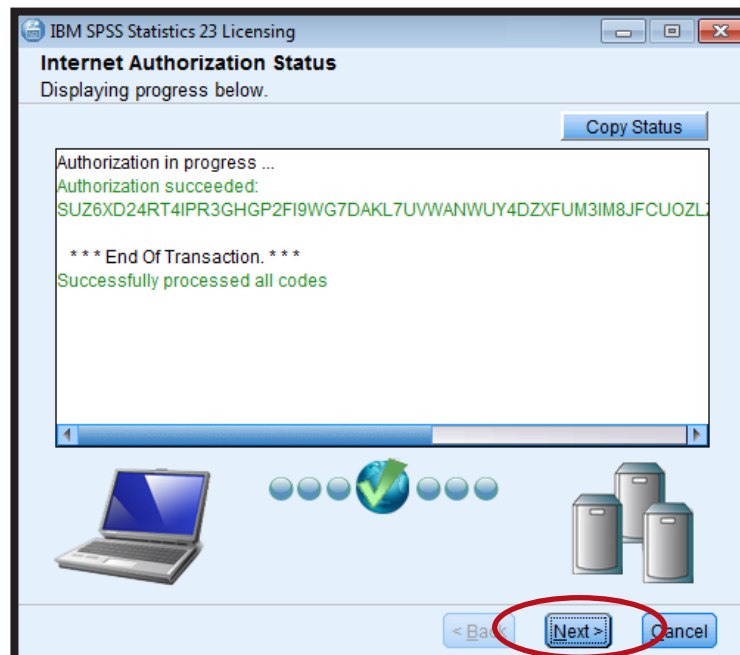




16. Type the authorization code for SPSS 23. The code is located on the flash drive in a text file. You will need to be connected to the internet in order to authorize SPSS. Click **Next**.

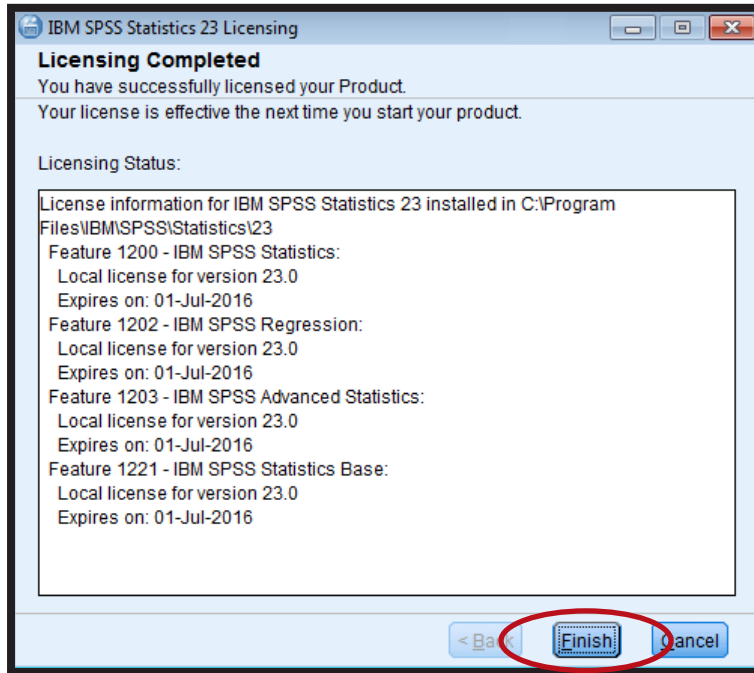


17. In the **Internet Authorization Status** window, when you see **Authorization succeeded**, you can click **Next**.





18. In the Licensing Completed window, click **Finish**.



19. After you click Finish, you will need to restart your computer. SPSS 23 should now be installed.

