

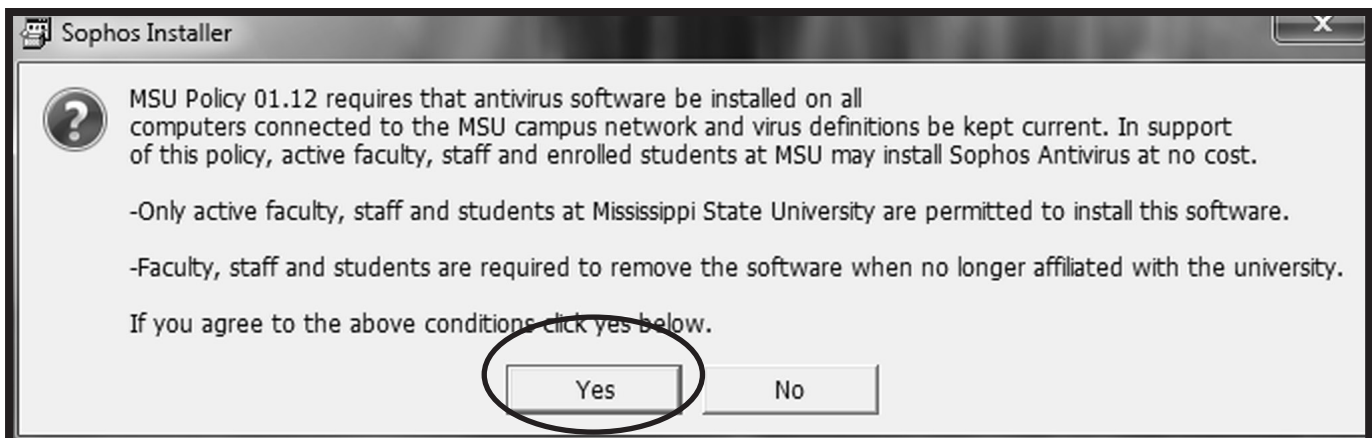


Installing Sophos: MSU's Anti-Virus Software (Windows)

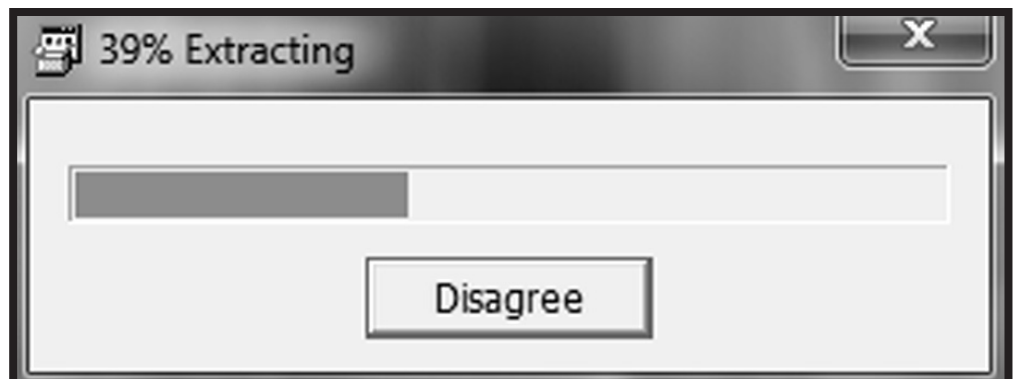
Sophos is MSU's anti-virus software that replaces Symantec End Point Protection. In the installation process, any previously installed versions of Symantec software will automatically be removed from your computer. Sophos will automatically update virus definitions when available. If you have any other virus protection software, you will need to uninstall that manually.

NOTE: The licensing agreement between MSU and Sophos requires a software reinstallation each year prior to June 30, when the annual licensing agreement is renewed.

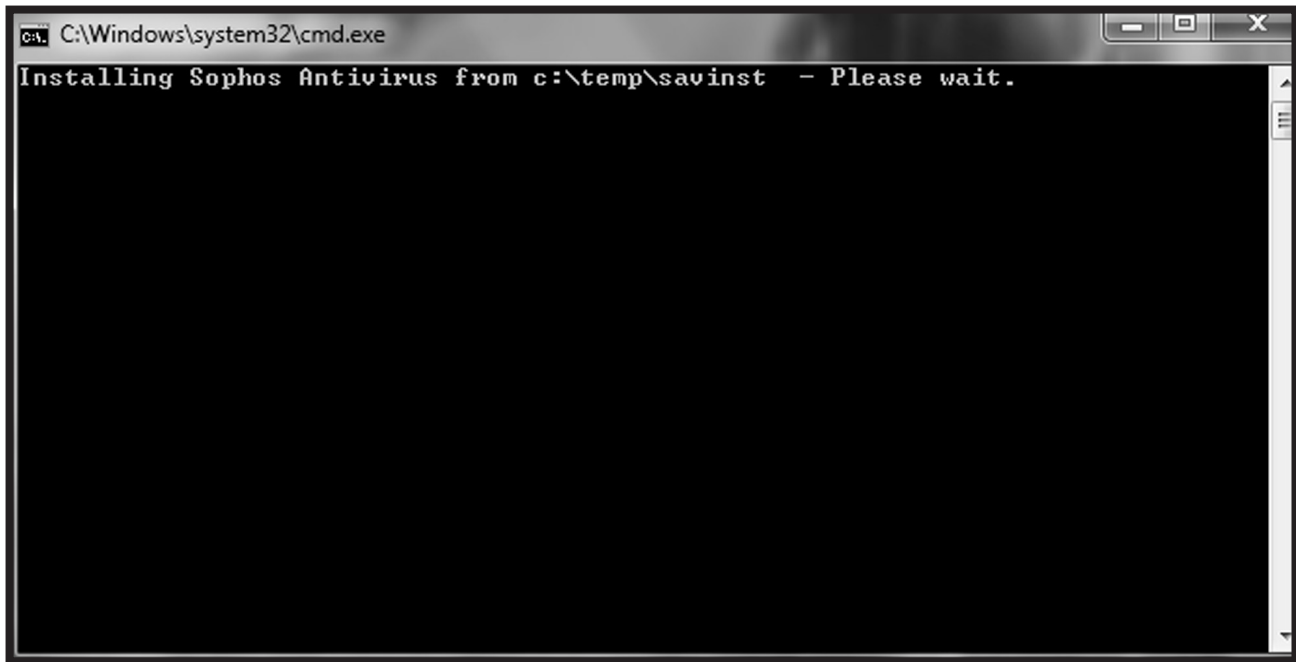
1. Double-click the SophosU11 installer icon to begin installation. Click **Yes** to agree to the conditions.



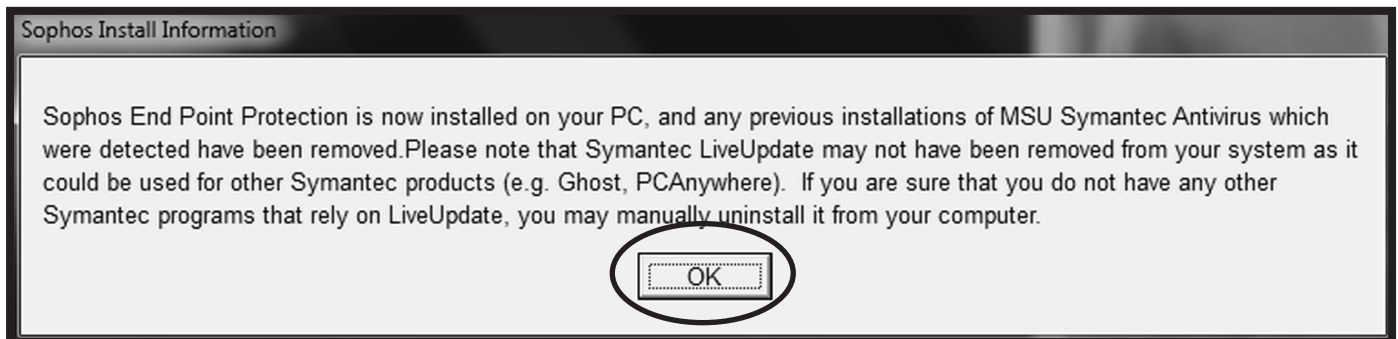
2. After clicking **Yes**, you will see the Sophos Installer extracting files.



3. **Sophos Endpoint Protection** will open a **command window** when the files have been extracted. Sophos will begin installation on your computer. You will see a UAC prompt at this point. Click **Yes** to continue installation.

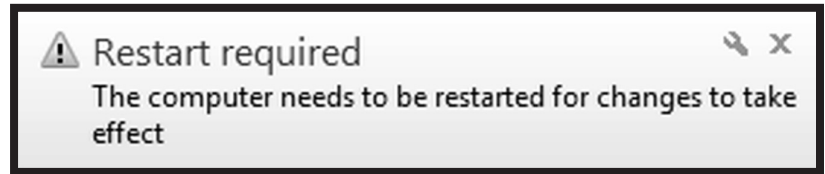


4. When the installation process is completed, an information window will appear. Click **OK** to close this window.

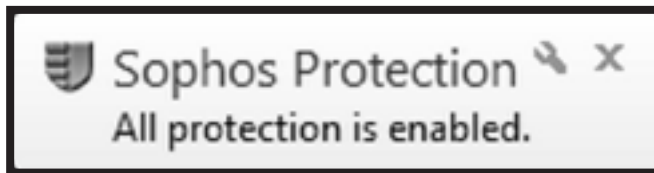




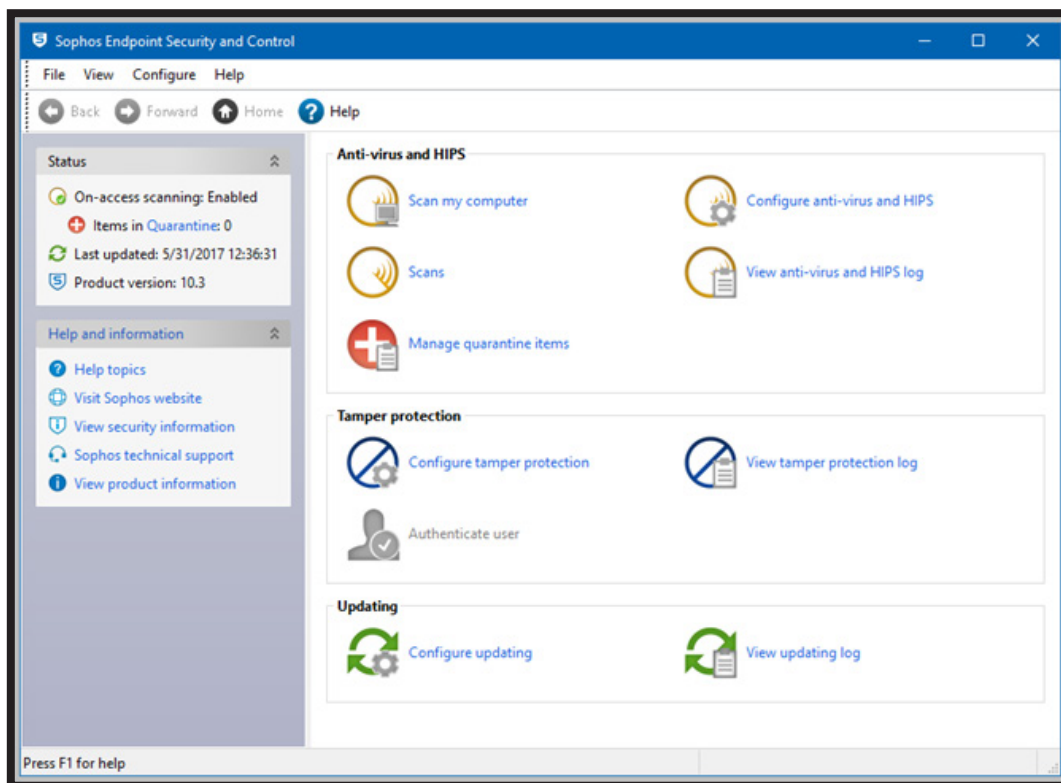
5. After Sophos is installed, you need to **restart** you computer.



6. After restarting, you a balloon message appears indicating that **Sophos is enabled**. A blue shield appears in your system tray.



7. You have successfully installed Sophos Endpoint Protection.



IMPORTANT NOTE: Because Sophos is very sensitive to any program installations on your computer, some programs may be perceived as “suspicious” by Sophos. If a Sophos authorization pop up window appears, take note of what software is in question. If you have any questions, contact the Help Desk.

CONTACT INFORMATION

Voice: 662-325-0631

Email: helpdesk@msstate.edu

Web: www.its.msstate.edu