



MISSISSIPPI STATE UNIVERSITY™

INFORMATION TECHNOLOGY SERVICES

eduroam Wireless Configuration: Windows 10

Spring 2017

This document contains step-by-step instructions to configure the MSU wireless network, **eduroam**, using Windows 10. Once your wireless device is configured, you are able to log in to any institution's eduroam wireless using your `netid@msstate.edu` email address as your user name and your NetPassword.

It is important that all **Windows 10** updates have been downloaded and installed prior to beginning this process.

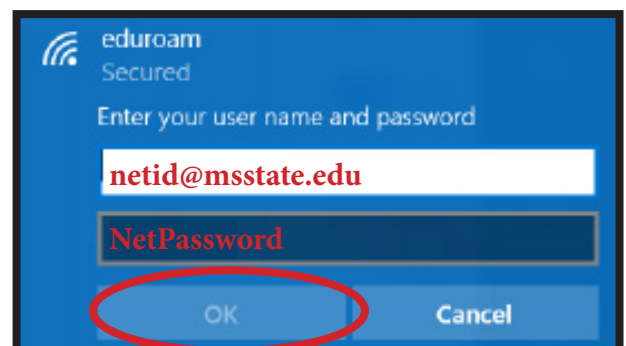
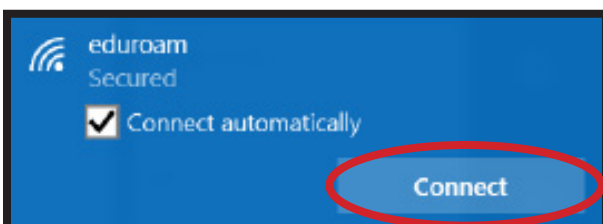
Configuring eduroam Using the Taskbar

1. To configure Windows 10 for eduroam, select the wireless icon in the taskbar menu. If you do not see the wireless icon, select the icon that expands your taskbar menu, then click the wireless icon.

Expands taskbar menu to show wireless icon, if needed.



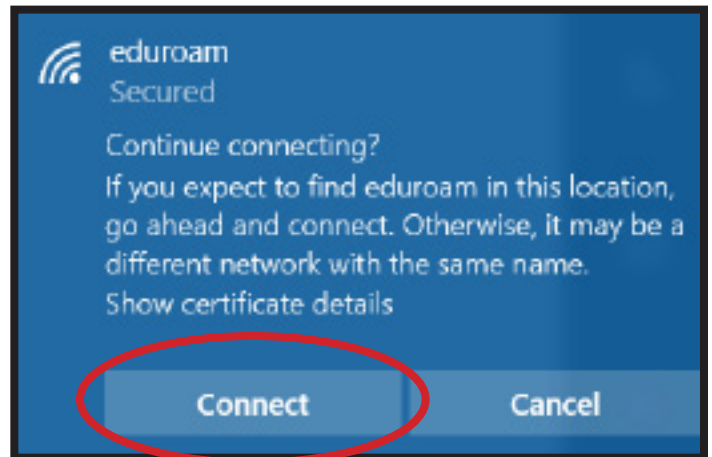
2. Select the **eduroam** wireless icon, then **Connect**. When prompted to enter your user name and password, enter your `netid@msstate.edu` email address as your user name and your **NetPassword** as your password. Click **OK**.





3. In the security box, click the **Connect** button.

*Note: Do not press the **Enter** key.*

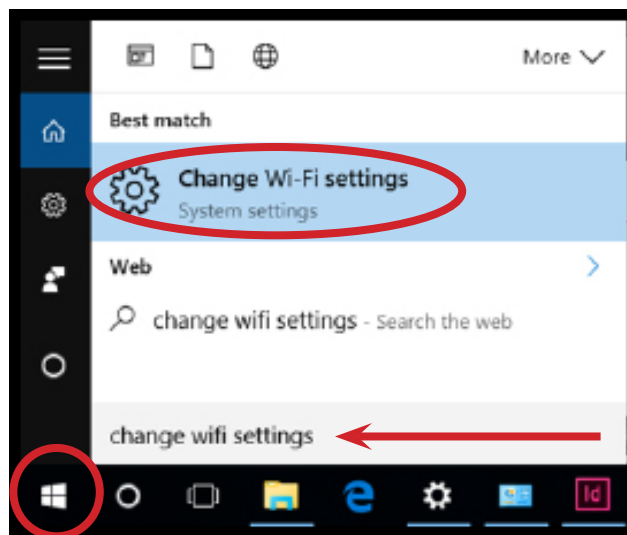


Wi-Fi Card Setting Changes

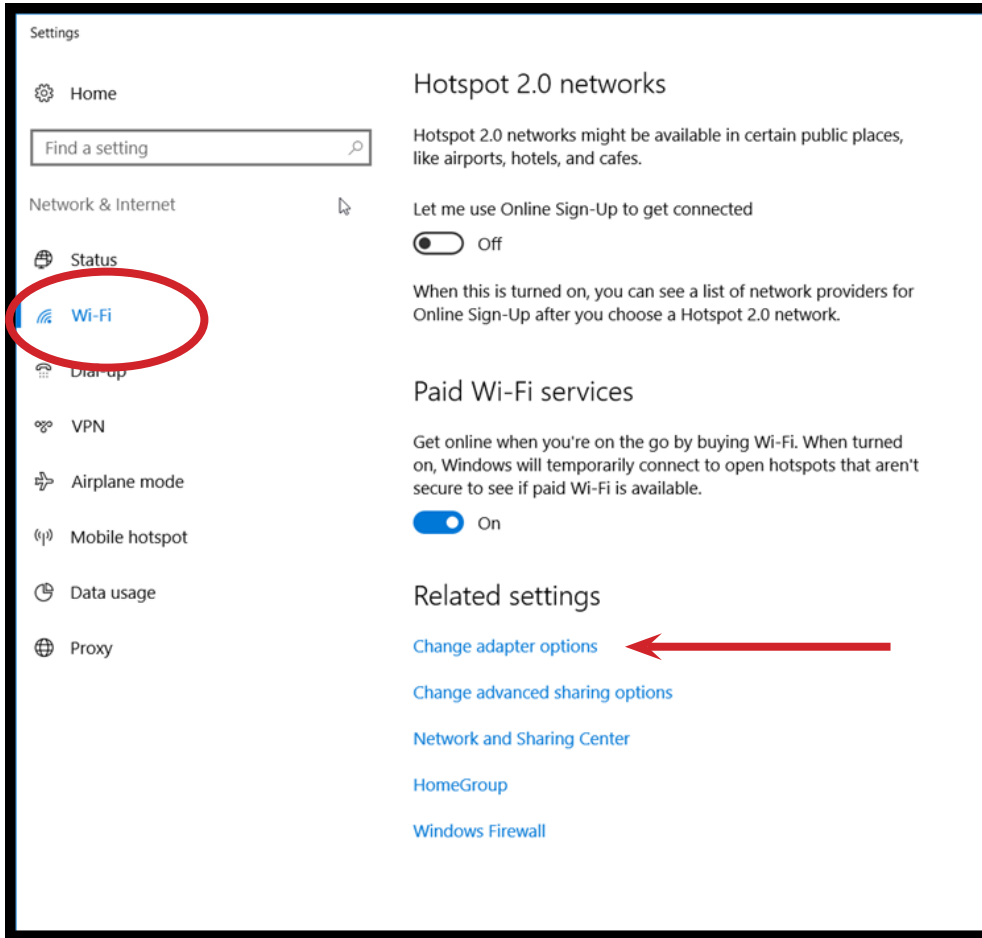
There are **Wi-Fi** card settings that must be changed in order for **eduroam** to continue to connect properly.

1. Select the **Windows** icon in the lower left portion of your screen. In the **Search** field, enter **change wi-fi settings**. If you do not see a search field, just start typing the words and the search field will appear.

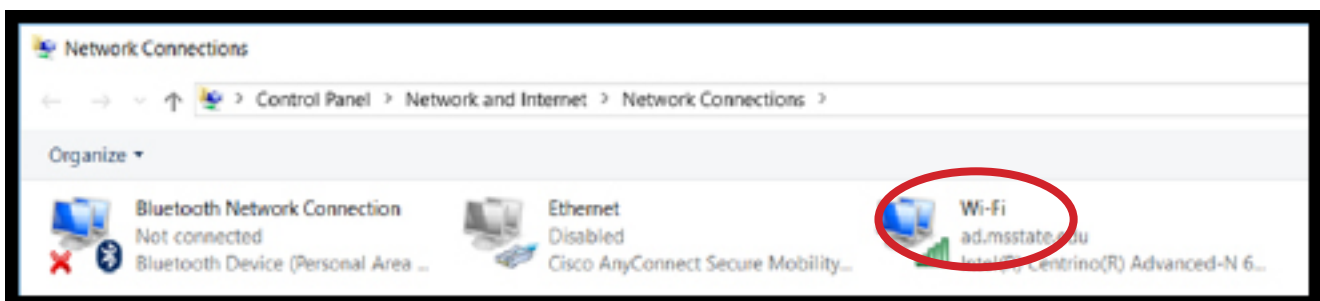
In the returned results, select **Change Wi-Fi Settings**.



2. In the **Network & Internet** window, select **Wi-Fi** on the left side.
3. Under the **Wi-Fi** heading, scroll down on the right hand side and select **Change adapter options**.

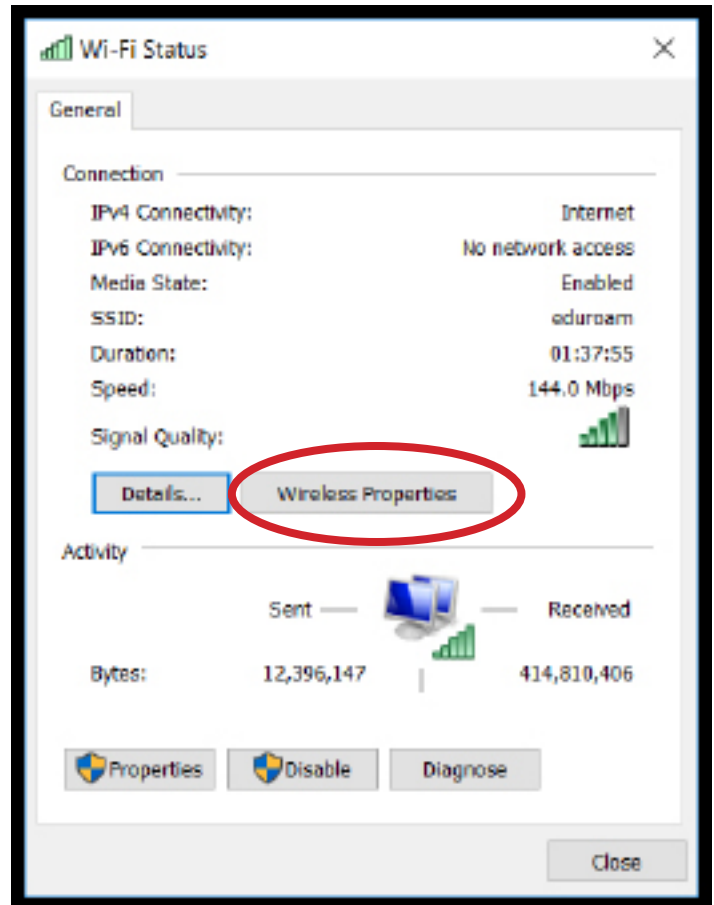


4. In the **Network Connections** window, double-click the **Wi-Fi** icon.





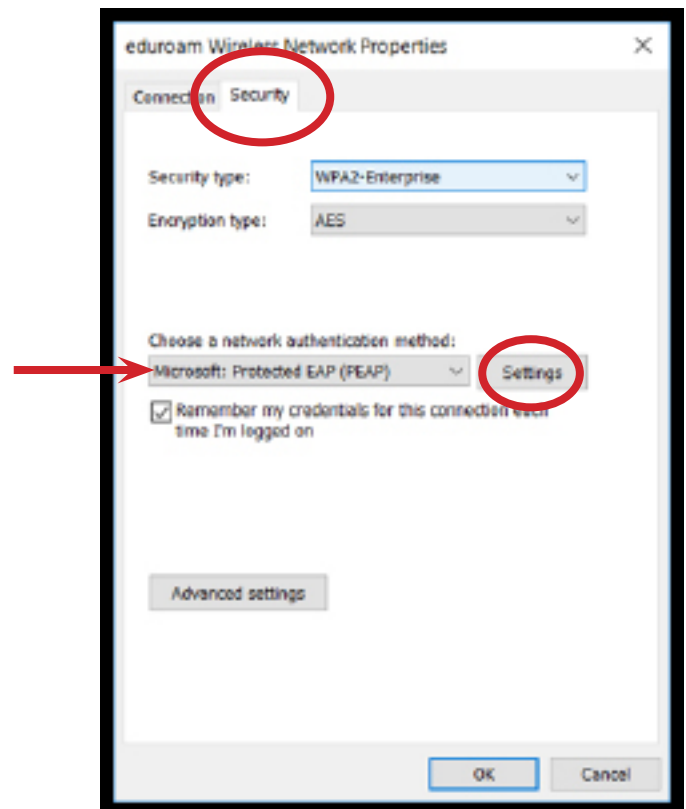
5. In the **Wi-Fi Status** window, click the **Wireless Properties** button.



6. In the **eduroam Wireless Network Properties** window, select the **Security** tab.

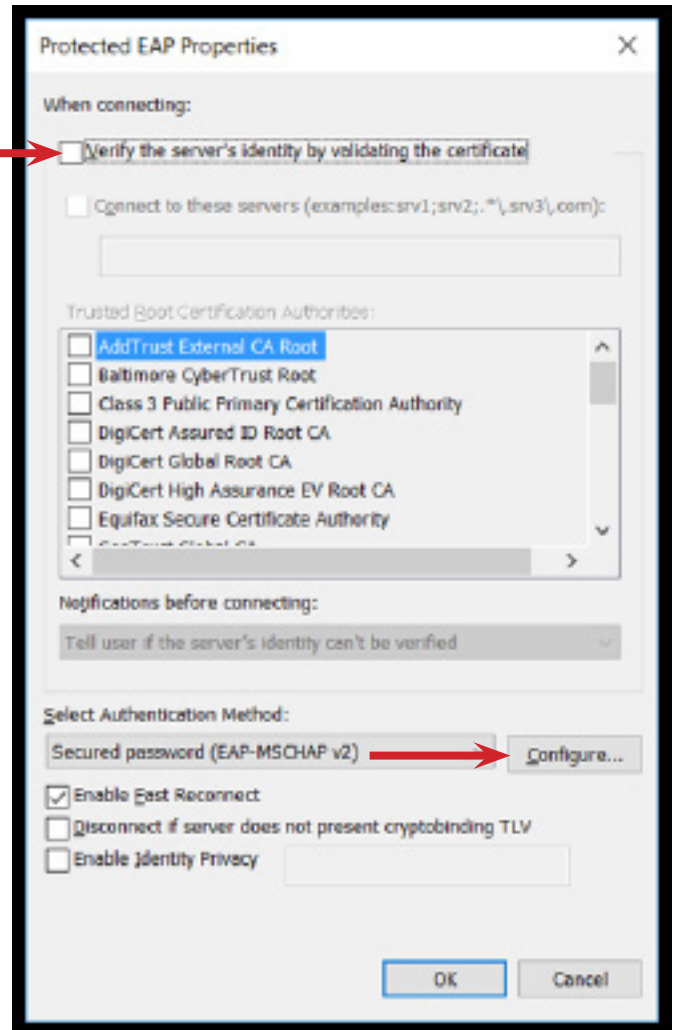
7. Under **Choose a Network Authentication Method** heading, select **Microsoft Protected EAP (PEAP)**.

8. Click the **Settings** button.

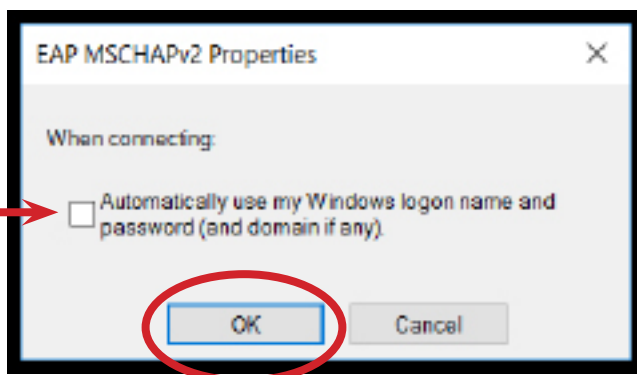




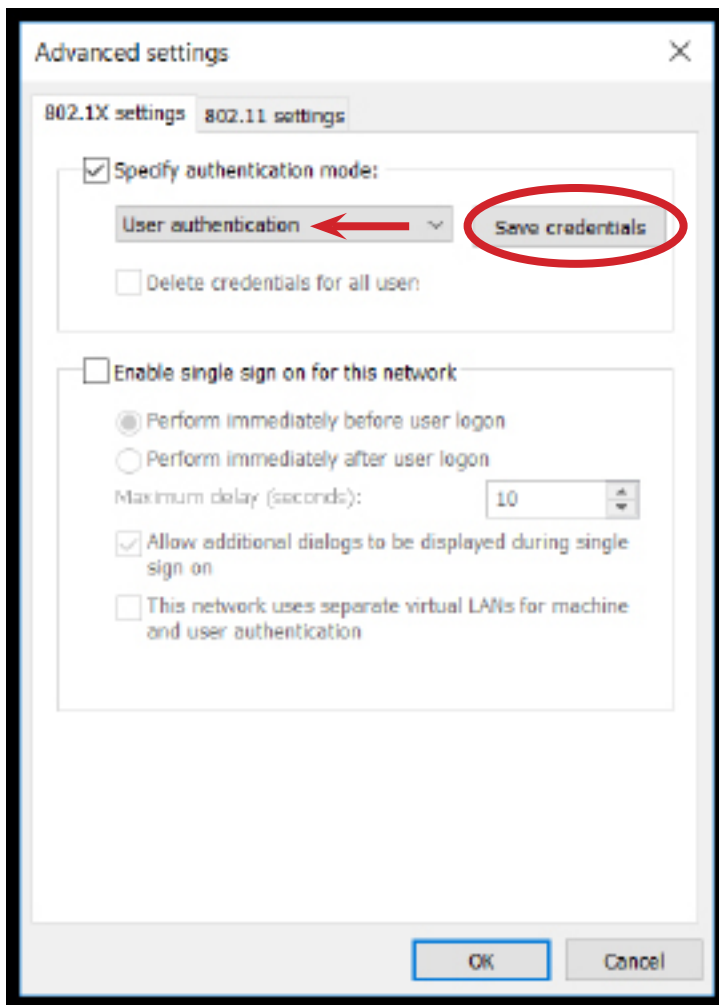
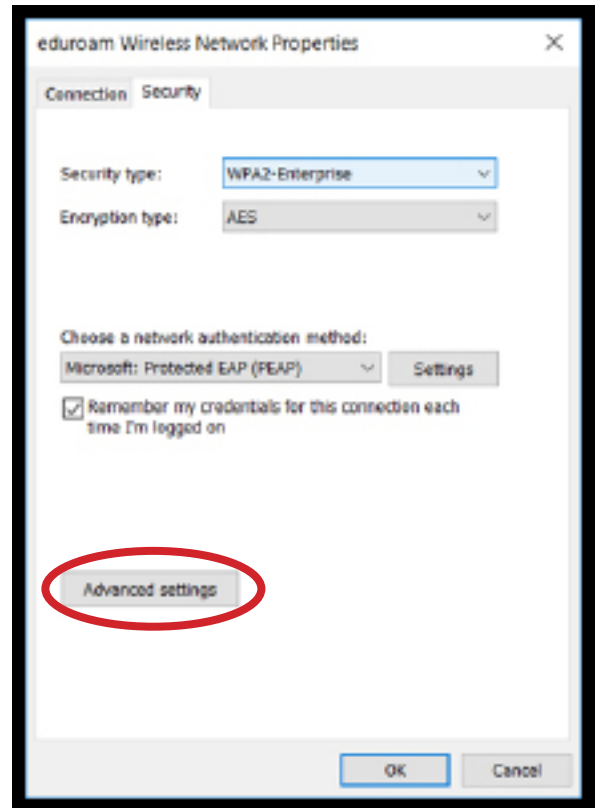
9. In the **Protected EAP Properties** window, deselect the box next to **Verify the server's identity by validating the certificate**.
10. Under the **Select Authentication Method** heading, click the **Configure...** button.



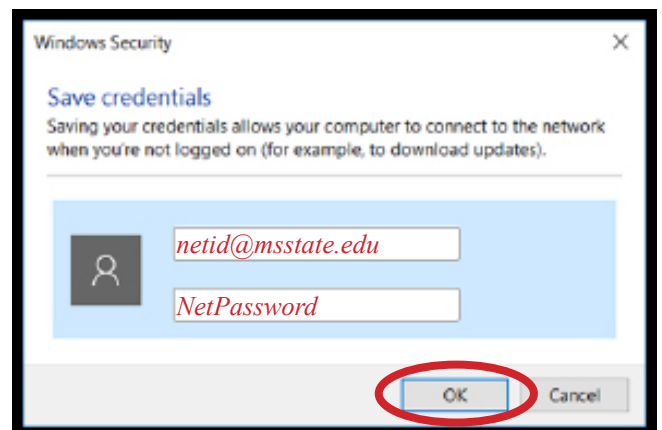
11. In the **EAP MSCHAPv2 Properties** window, make sure the box next to **Automatically use my Windows logon name and password** is **NOT** selected. Click **OK**, then **OK**.



12. The **eduroam Wireless Network Properties** window is visible. Click the **Advanced settings** button.
13. Under the **Specify authentication mode:** heading, select **User authentication** in the drop-down menu.
14. Click the **Save credentials** button.



15. In the **Windows Security** window, enter your **netid@msstate.edu** as your **User name** and your **NetPassword** as your **Password**. Click **OK**.
16. Click **OK** in the remaining windows.



17. Your wi-fi should automatically connect to the **eduroam wireless system** after completing this process. If you change your NetPassword you will have to repeat steps 12-16.