



Administrative Banner Login

To login to Administrative Banner, go to <http://my.msstate.edu> or <http://banner.msstate.edu>. If you are off campus and need to access, the VPN client must be installed in order to access Administrative Banner. There is a VPN factsheet on the ITS web page (www.its.msstate.edu) for setting up the VPN client on your computer.

1. Open your web browser and go to my.msstate.edu. Login using your NetID and NetPassword.

my STATE | **M STATE** | **MISSISSIPPI STATE UNIVERSITY™**

NetID

NetPassword

Login Clear

Need Help?

- Supported Browsers
- Trouble Logging In
- Disabling Pop-up Blockers

Online Resources...

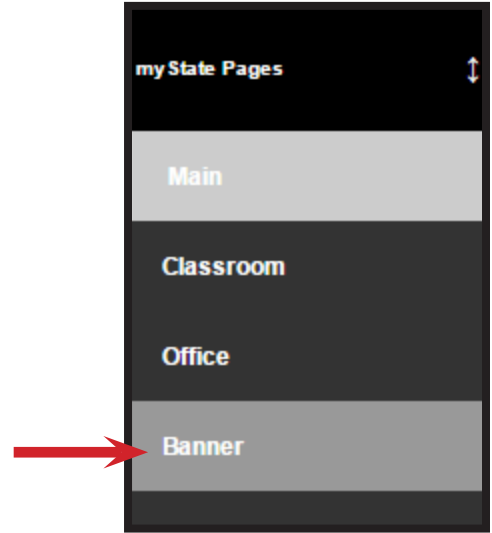
- myCourses
- Banner
- Course Catalog
- Class Schedule

COMODO SECURE

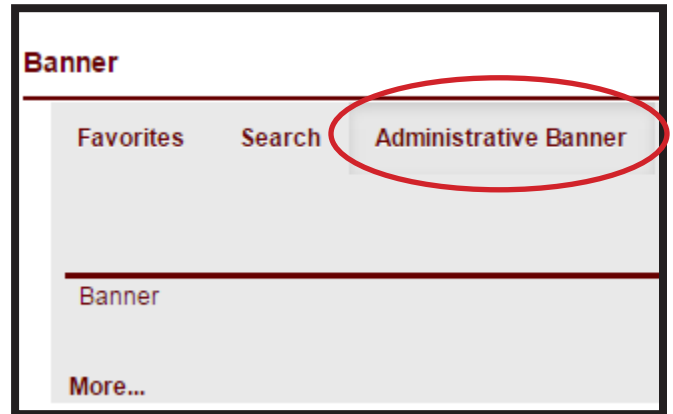
Technical problems, contact the Help Desk
Information about Mississippi State University, contact opa@msstate.edu.
URL: <https://my.msstate.edu>



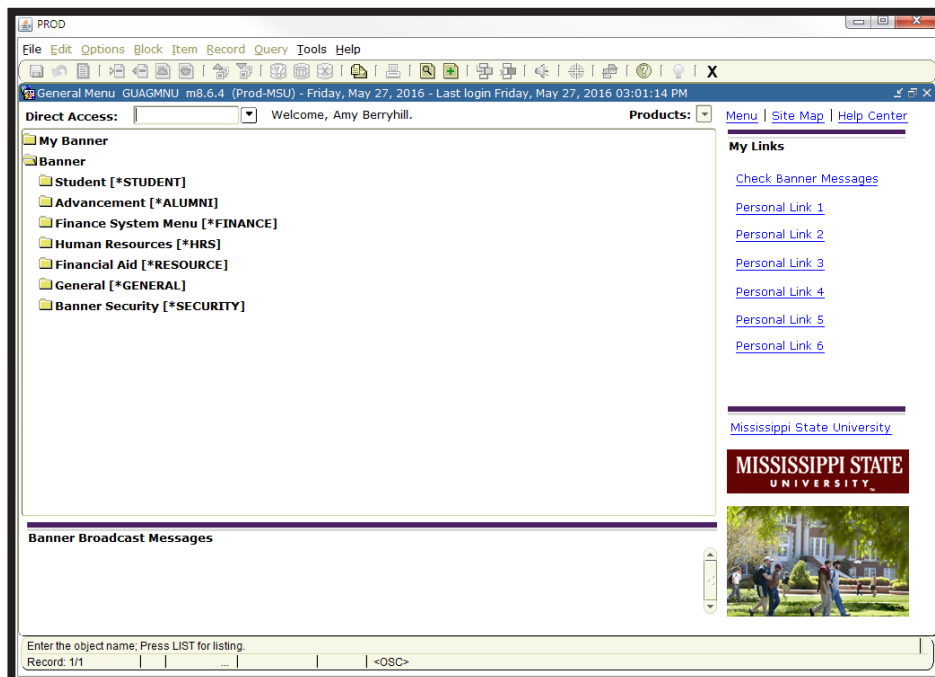
2. After you are logged into myState, select the **Banner** link in the sidebar.



3. In the **Administrative Banner** dropdown menu, select **Banner**.



4. The Administrative Banner window should appear.

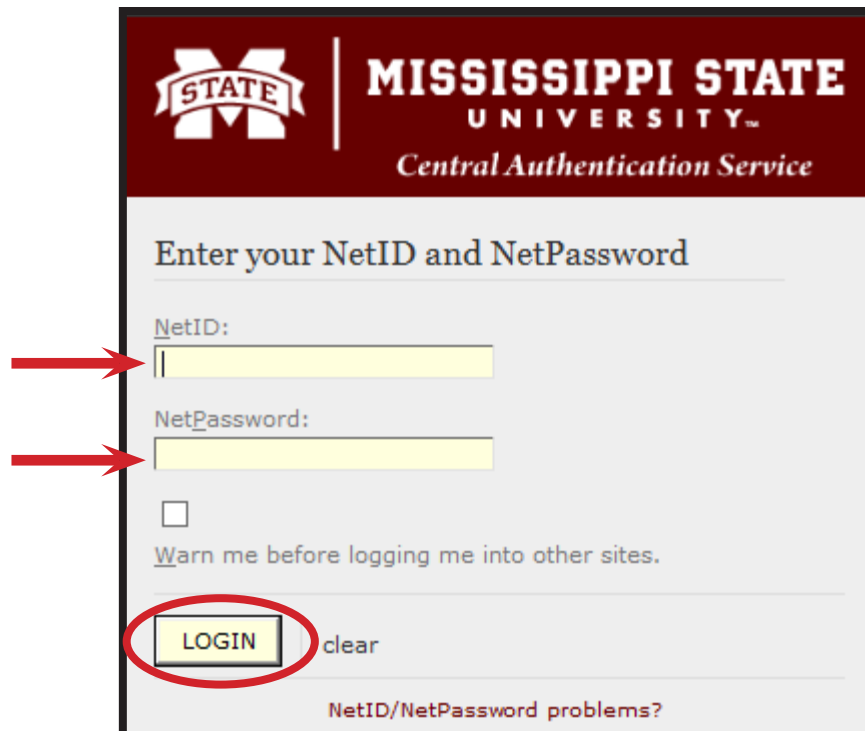




5. To login to **Administrative Banner** from banner.msstate.edu, click the Administrative Banner button.

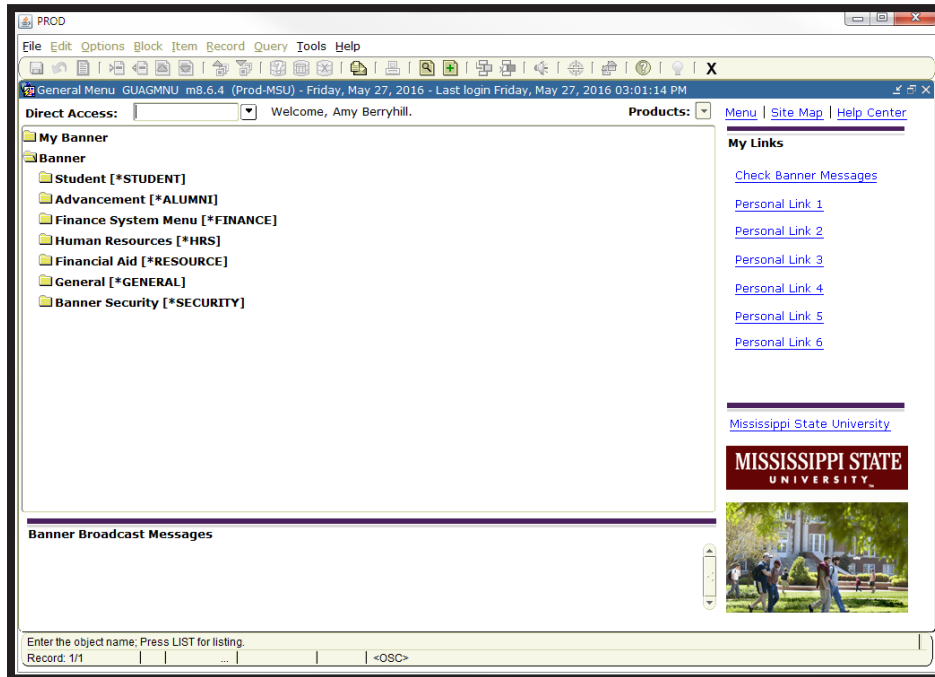


6. You will be prompted to enter your Banner username and password which is your **NetID** and **NetPassword**. Click **Connect**.





7. The Administrative Banner should appear.



CONTACT INFORMATION

Voice: 325-0631

Email: helpdesk@msstate.edu

Web: www.its.msstate.edu