

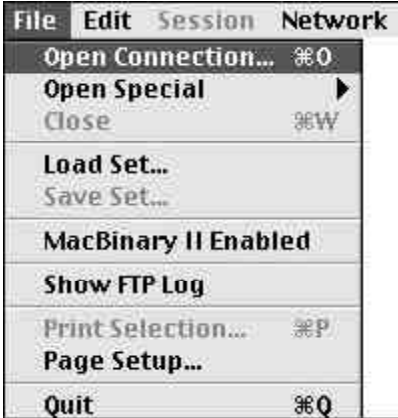
User Services

Spring 2002

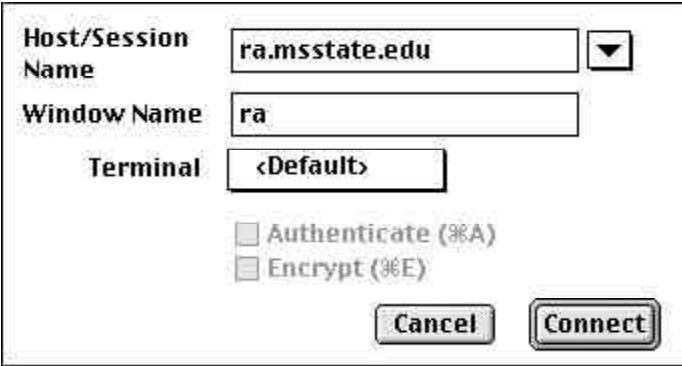
Using Telnet for Macintosh

NCSA Telnet is shareware and can be found at www.shareware.com.

1. Run the NCSA Telnet program.
2. From the main pulldown menu, choose **File** and then **Open Connection**.



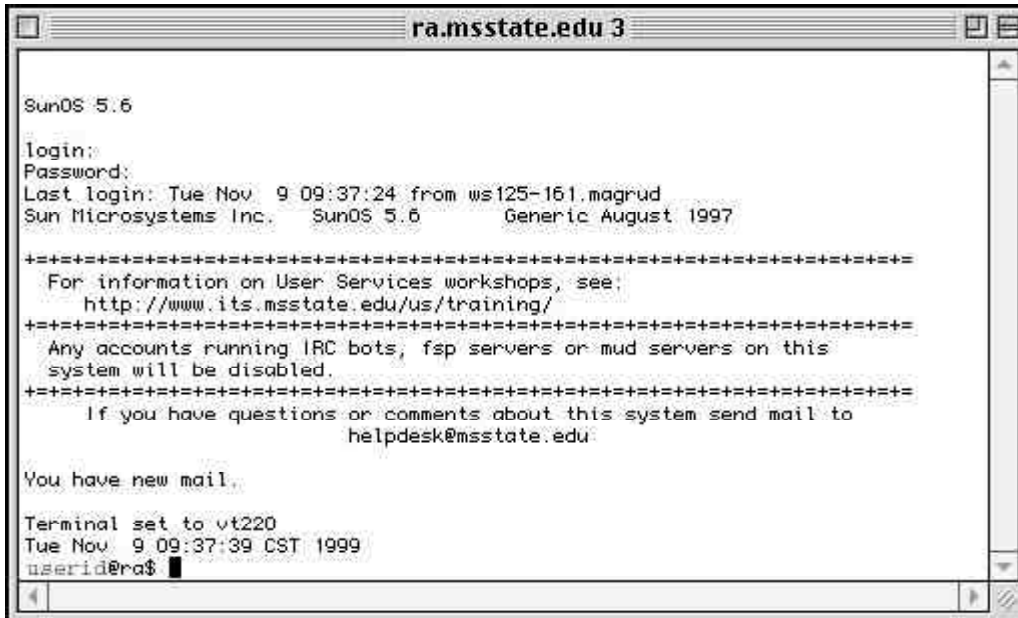
3. A dialog box will appear and you will be prompted to enter a Host/Session Name. Type the domain of the computer system that you are trying to telnet to. If you are going to the RA server at MSU, type ra.msstate.edu.



4. Click the **Connect** button and your session window will open. You will be prompted to enter your login (this is usually your initials plus a numeral). Type in your user ID and press **Return**. Then type your password and press **Return**. Your password will not be visible on the screen as you type.



- You will then be placed at your prompt and are ready to go.



```

ra.msstate.edu 3
SunOS 5.6
login:
Password:
Last login: Tue Nov  9 09:37:24 from ws125-161.magrud
Sun Microsystems Inc. SunOS 5.6 Generic August 1997

+++++
For information on User Services workshops, see:
http://www.its.msstate.edu/us/training/
+++++
Any accounts running IRC bots, fsp servers or mud servers on this
system will be disabled.
+++++
If you have questions or comments about this system send mail to
helpdesk@msstate.edu

You have new mail.

Terminal set to vt220
Tue Nov  9 09:37:39 CST 1999
userid@ra$
  
```

- If you have any unread email messages on your RA account, you will see the phrase “You have new mail.” [Click here](#) for information on using Pine to check your email.
- When you have finished your tasks on the remote computer, log out of the system. You can choose **File** and **Close** from the main menu, or you can hold down the **Control** button and the **D** key on your keyboard.
- You are logged out of the system. Choose **File** and **Exit** from the main menu to close the program.

Contact Information:

Voice: 325-0631

E-mail: helpdesk@msstate.edu

Web: www.its.msstate.edu