

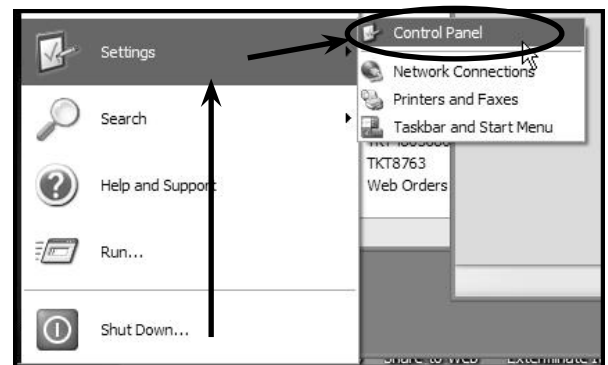
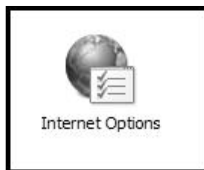


## Connecting to the MSU VPN Service

Before you connect, adding a security appliance to the list of trusted sites is required for IE 7.0 or later on Windows Vista. This is also recommended for other browsers in order to eliminate certain security pop-up messages upon connection.

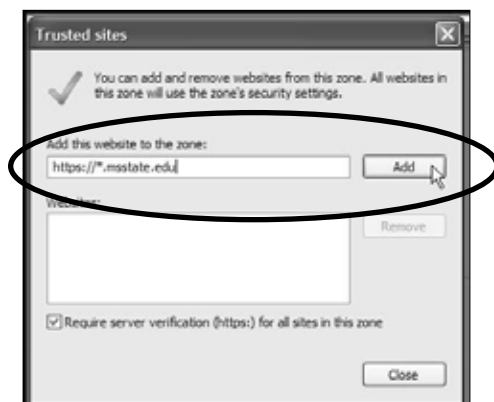
1. To add the security appliance to the list of trusted sites, go to the **Start menu** and select **Settings**, then choose **Internet Options**.

2. Double-click the **Internet Options** icon.



3. Select the **Security Tab** in the Internet Properties window. Select **Trusted sites** and click the **Sites** button.

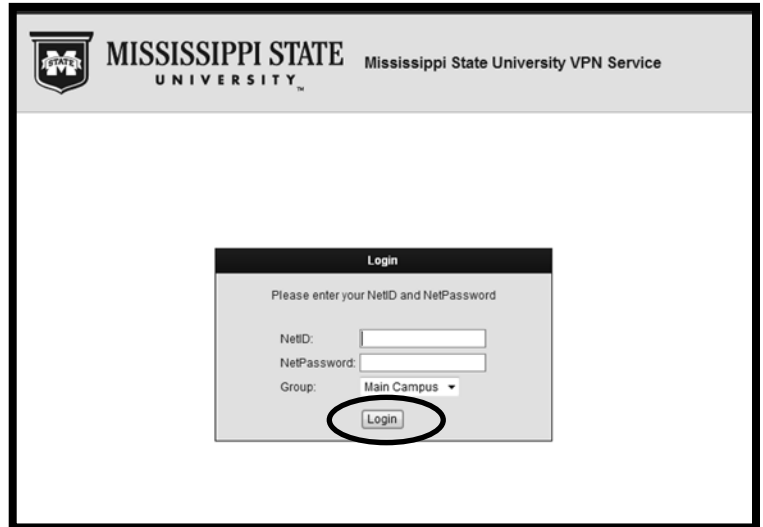
4. Add **https://\*.msstate.edu** and click the **Add** button. This allows secure sites from the msstate.edu domain to be trusted. Click **Close**.



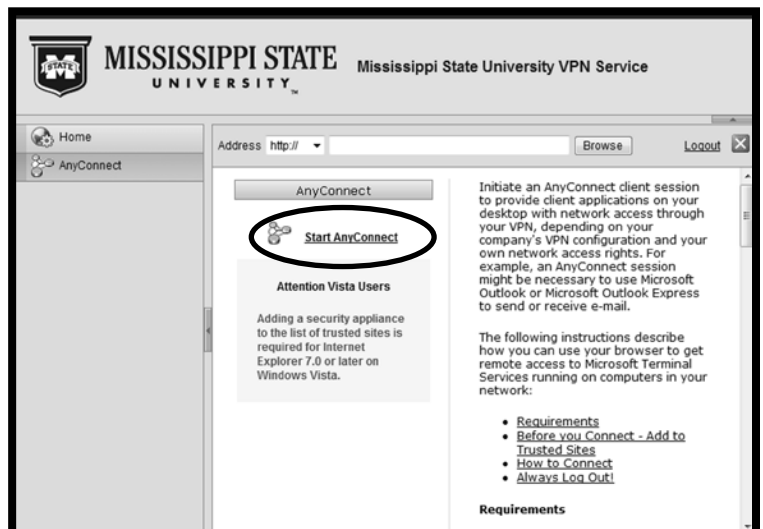


1. Go to <https://vpn.msstate.edu>

Login using your NetID and NetPassword. Choose the correct group from the drop down menu and click **Login**.



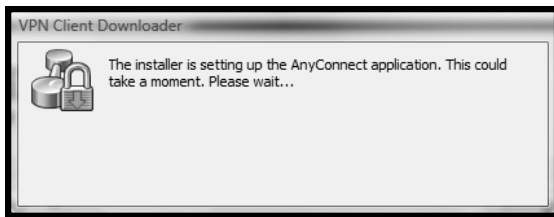
2. Click **Start AnyConnect**.





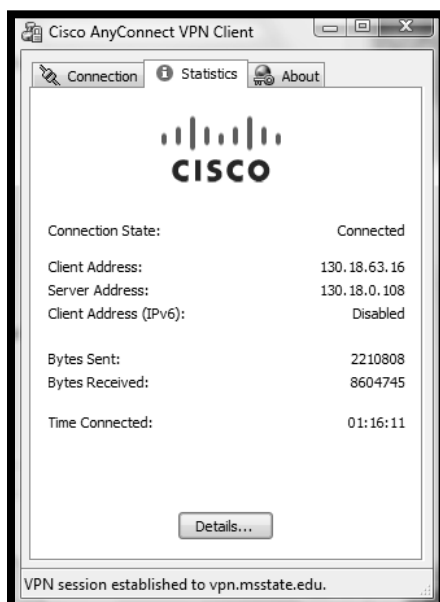
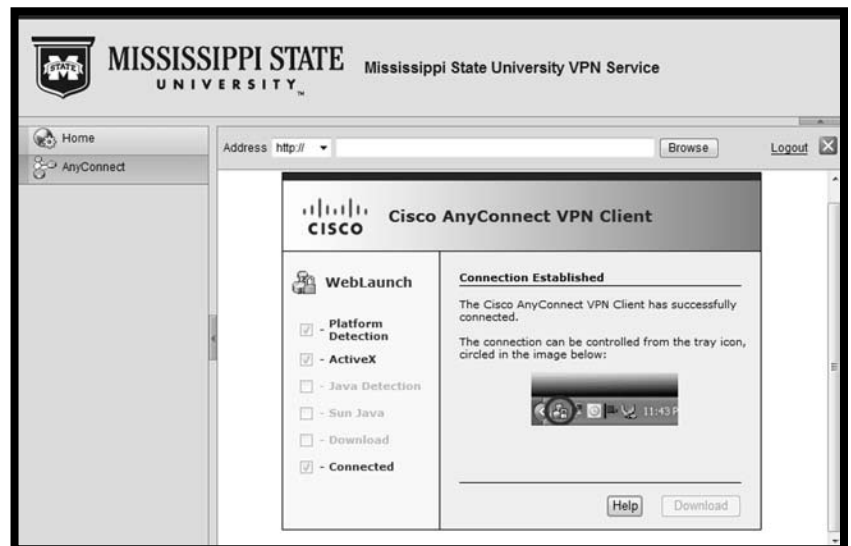
3. After clicking **Start AnyConnect**, the Cisco AnyConnect VPN Client installation wizard launches.

If you are running Windows Vista, you will be prompted to allow this installation to continue.



4. After the Cisco AnyConnect VPN Client is installed, it automatically connects.

The AnyConnect icon appears in the system tray after it is connected.

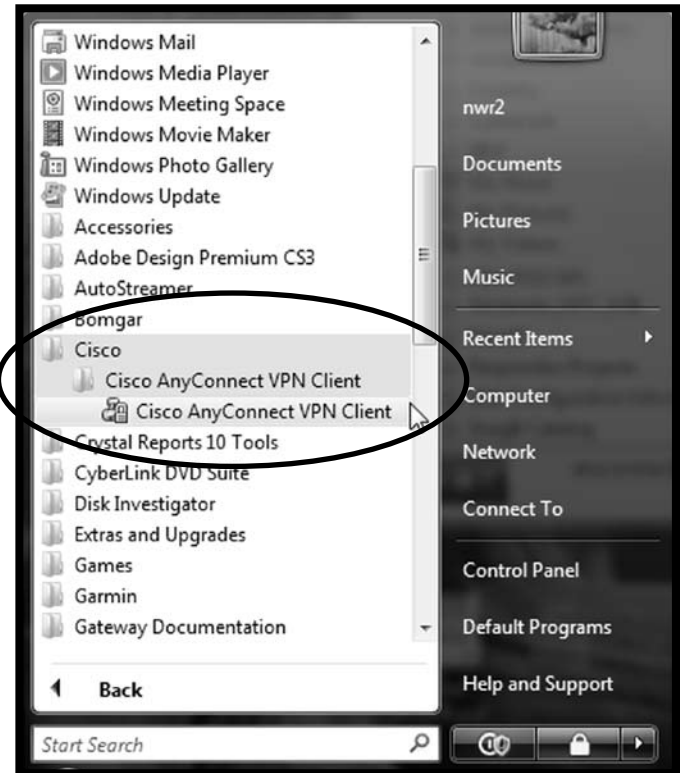




5. After the Cisco AnyConnect VPN Client is installed, you will be able to access it from the **Start menu**.

Click the Start icon and go to Programs. Under **Cisco**, select **Cisco AnyConnect VPN Client** to open the VPN client.

6. When you are ready to disconnect, click the **AnyConnect VPN Client icon** in your system tray. The **VPN Client window** appears. Click the **Disconnect** button.



7. The next time you need to activate the **Cisco AnyConnect VPN Client**, go to the **Start** menu and choose it from the **Programs** list.



CONTACT INFORMATION

Voice: 325-0631

Email: [helpdesk@msstate.edu](mailto:helpdesk@msstate.edu)

Web: [www.its.msstate.edu](http://www.its.msstate.edu)