

## **MSU Dial-Up Access for Macintosh OS X**

Mississippi State University provides dial-up network access service as a convenience to students, faculty and staff. State-of-the-art technology allows users to connect to campus resources and the Internet via V.34 (up to 33.6K), V.90 (up to 56K), and ISDN (64K or 128K full digital). This handout provides information on connecting to the dial-up network access service using Macintosh Operating System X.

### **Table of Contents**

What You Need to Get Started.....1

Remote Access Set Up for Mac OS X.....2

Connecting to the Dial-up Access.....5

View Your Dial-Up Session Time for the Month.....7

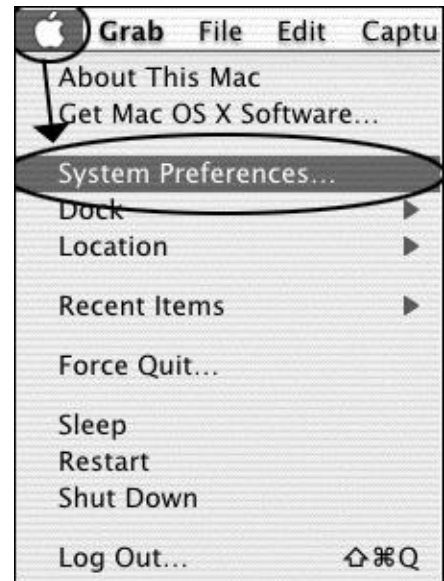
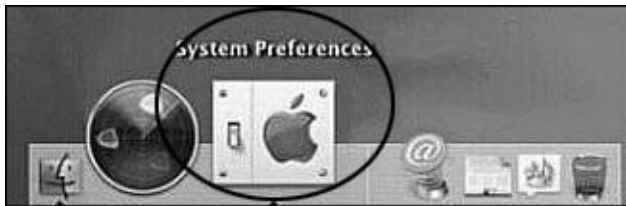
### **What You Need to Get Started**

- 1. Computer** You need a Macintosh computer system with Operating System X.
- 2. Modem** You need a modem to dial into the MSU network. The modem should already be installed or connected correctly.
- 3. Telephone Line** You need a telephone line connected correctly to your modem.
- 4. Dial-Up Account** When you received a dial-up account at MSU Telecommunications, you were given a **Username** and **password**. To set up your computer to connect to the MSU dial-up network access service, you will need to know your **Username** and **password** from MSU Telecommunications.

You may apply for a dial-up account at the Telecommunications Business Office located at 10 Lee hall, or you can view the following Web page for more details: <http://www.its.msstate.edu/dialupnet.html>.

## Remote Access Set Up for Mac OS X

1. Click the **Apple** pull-down, select **System Preferences**. Or you can find **System Preferences** from the OS X program dock.



2. Within the **System Preferences** window, double click on the **Network** icon.



# Dial-Up Access For Macintosh OS X

User Services

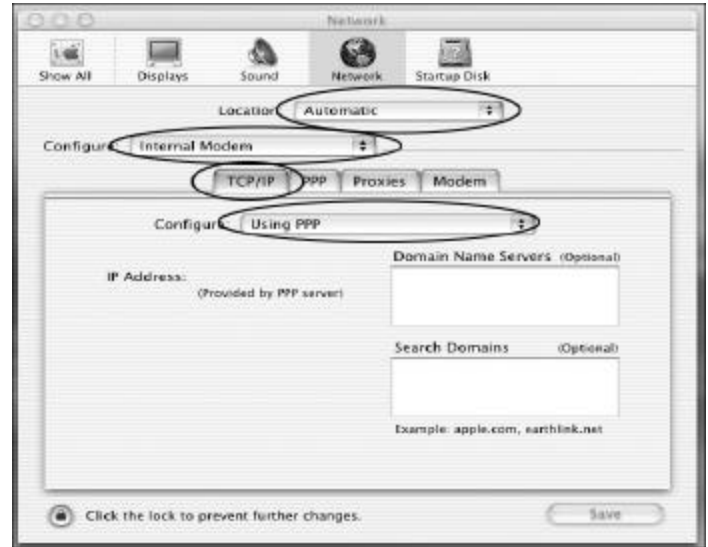
3. Within the **Network** window, make sure the **TCP/IP** tab is selected. In the **Location** box, select **Automatic**. In the **Configure** drop-down list, select how your modem is connected (**Internal** or **External**). Within the **TCP/IP** tab, locate the **Configure** drop-down list and select **Using PPP**. Leave the **Domain Name Servers** and **Search Domains** boxes empty.
4. Next, click on the **PPP** tab. In the **Location** drop-down list, select the place where you are connecting from. In the **Telephone** box, type **325-6381** for Off-campus access or **5-6381** for On-campus access. If you are connecting from long distance, type **1-888-476-9833** (See note for charges).

**Note:** \*70, is used to disable call waiting. If call waiting is not used, do not enter \*70, in front of the phone number to dial.

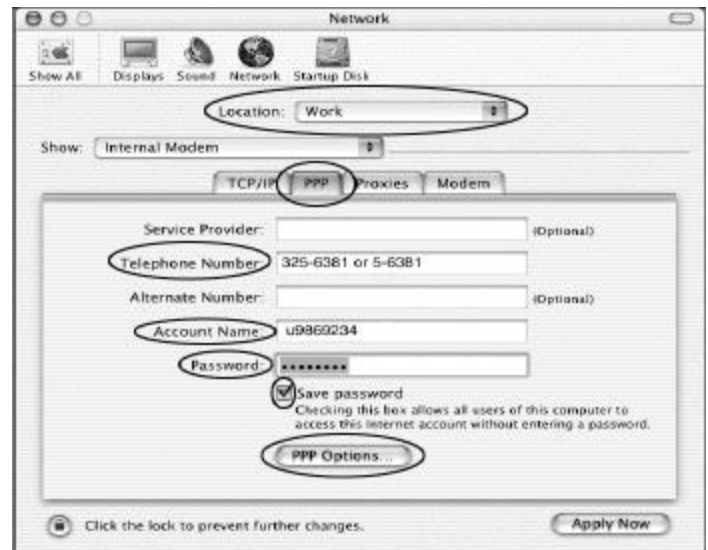
5. In the **Account Name**, type in your **Username**. In the **Password** box, type in your **Password**. Select the **Save Password** checkbox to save your **Password**. Click the **PPP Options** button.

**Note:** The **Username** and **Password** were given to you by **Telecommunications** when your account was activated.

**Note:** Do not call the Help Desk for this **Username** and **Password**. Contact **Telecommunications** at 325-2212.



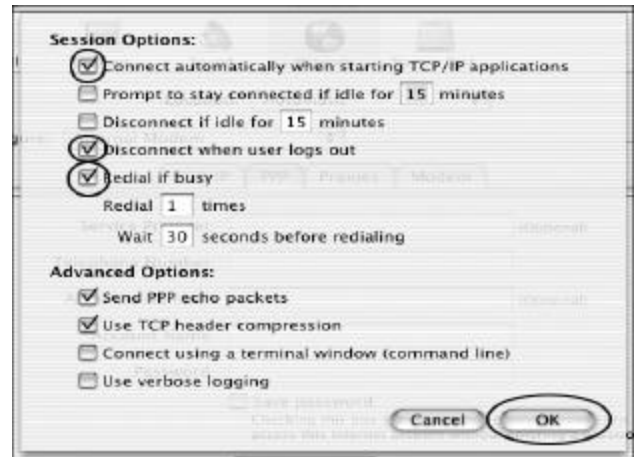
**Note:** When using the **18884769833** long-distance number, there is a per minute charge of 15 cents or an hourly charge of \$9.00.



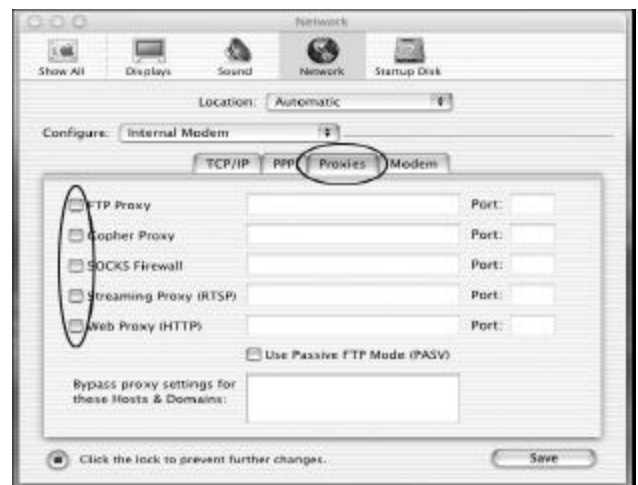
# Dial-Up Access For Macintosh OS X

User Services

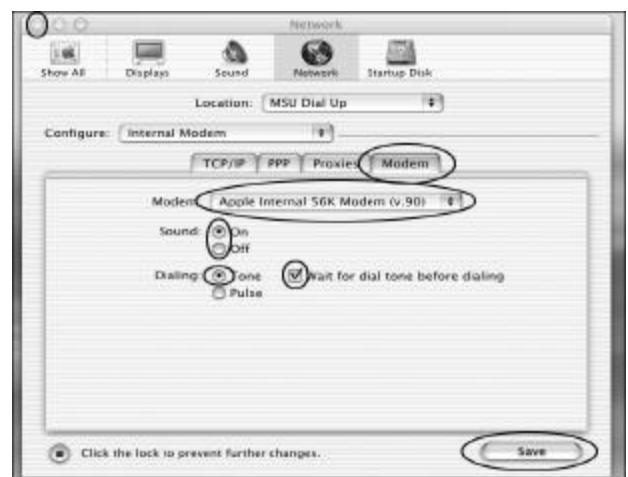
6. Within the **PPP Options** window, make sure that the only boxes that are checked under the **Session Options** section are the **Connect automatically when starting TCP/IP applications**, **Disconnect when user logs out**, and **Redial if busy**. In the **Redial [ ] times** and **Wait [ ] seconds before redialing**, type any number that is necessary. Under the **Advanced Options**, select the **Send PPP echo packages** and **Use TCP header compression** check boxes. Click the **OK** button.



7. Next, click on the **Proxies** tab. Make sure to uncheck all of the boxes.



8. Next, click on the **Modem** tab. In the **Modem** drop-down list, select the type of modem is attached to your computer. For the **Sound** radio buttons, you can choose to turn it **On** or **Off**. Select the **Tone** radio button for the **Dialing** property. Check the **Wait for dial tone before dialing** check box. Click the **Save** button. Close the **Network** window.



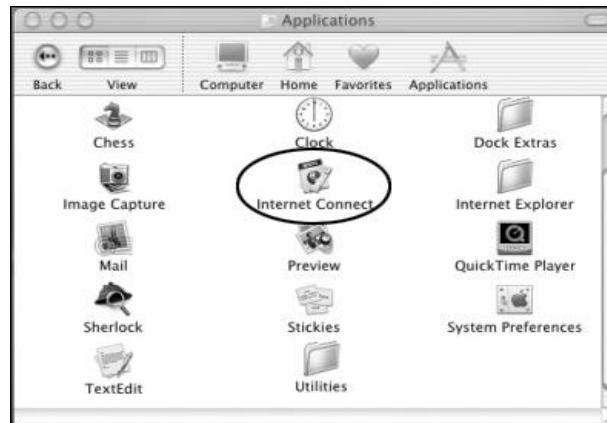
9. Congratulations, you have now configured your **MAC OS X** to connect to the **MSU Dial-up Access**.

## Connecting to the Internet

1. Double click on the **HD** icon on your desktop and choose the **Applications** folder.



2. Within the **Applications** folder, double click on the **Internet Connect** folder.



3. Within the **Internal Modem** window, your **Username** will already be in the **Name** space. Type your **Password** in the **Password** box. Click the **Connect** button.

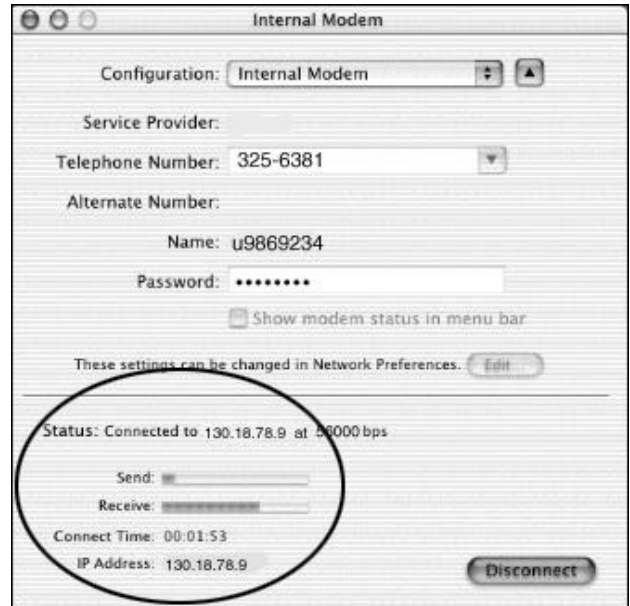
**Note:** Do not call the Help Desk for this Username and Password. Contact Telecommunications at 325-2212.



# Dial-Up Access For Macintosh OS X

## User Services

- Once you are connected, the bottom of the window will change to reveal information about your connection.



- You are now connected to the Internet. You must now open your Internet browser (**Netscape**, **Explorer**) to view the Internet.



- When you are ready to disconnect, click the **Internet Connect** icon on the Dock. That will pull up the **Internal Modem** window once more. Click **Disconnect**.



- Congratulations, you can now access the Internet.



## View Your Dial-Up Session Time for the Month

Information Technology Services provides a means in which you can determine your usage time of your MSU dial-up network access service account. Depending on the dial-up plan purchased, you can view on-line how much of your time has been used per month (and whether you've exceeded your plans limit). To check your plan's usage status, follow the step-by-step directions below.

1. Open an Internet browser and go to the following Web site: <http://www.its.msstate.edu/Services/Accounts/Network/index.php>
2. At this Web site, you will see the section **View Your Dial-Up Session Time for the Month**. Type in your **Terminal Server User ID** (Your User name given to you when you were granted dial-up access by ITS Telecommunications). Click the **Get Status** button.

**Note:** Do not call the Help Desk for this User name. Contact Telecommunications at 325-2212.

View your Dial Up Session Time for the month  
 Depending on the dial-up plan purchased, you can determine how much of your time has been used currently (and whether you've exceeded your's plan's limit). To check your plan's status, you need your Terminal Server User ID (given to you when you were granted dial-up access by ITS Telecommunications).

Enter your Terminal Server User ID , then

**Enter User Name Here**

3. The next screen will display your usage for one month. You may want to bookmark this location so that you do not have to enter your User Name again.

**Mississippi State UNIVERSITY**

**Information Technology Services**

Dial Up Session Time for z2222222 ← **Your User Name Will Display Here**

Session Start	Session Stop	Duration	Total
Mar 2 19:08:14	Mar 2 19:45:09	0:07:25	0:17:44
Mar 2 17:09:22	Mar 2 17:12:41	0:10:19	0:10:19

Your Session Time report is updated once a day.

Tip: Bookmark this URL; next time you won't have to log up your User ID.

Mississippi State University is a proud member of the

4. Congratulations, you can determine your MSU dial-up network access usage time for the month.

**Contact Information:**  
 Voice: 325-0631      E-mail: [helpdesk@msstate.edu](mailto:helpdesk@msstate.edu)      Web: [www.its.msstate.edu](http://www.its.msstate.edu)