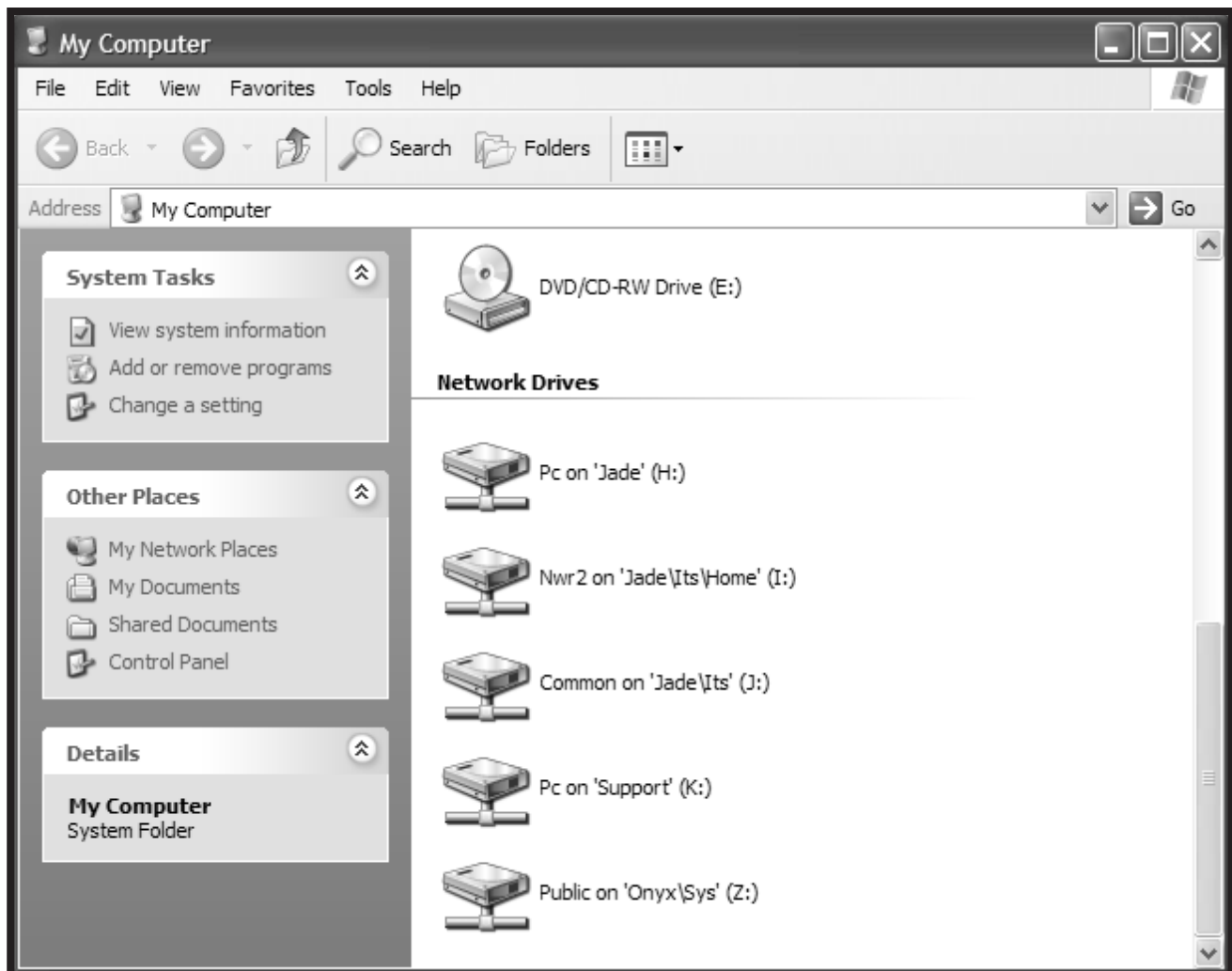




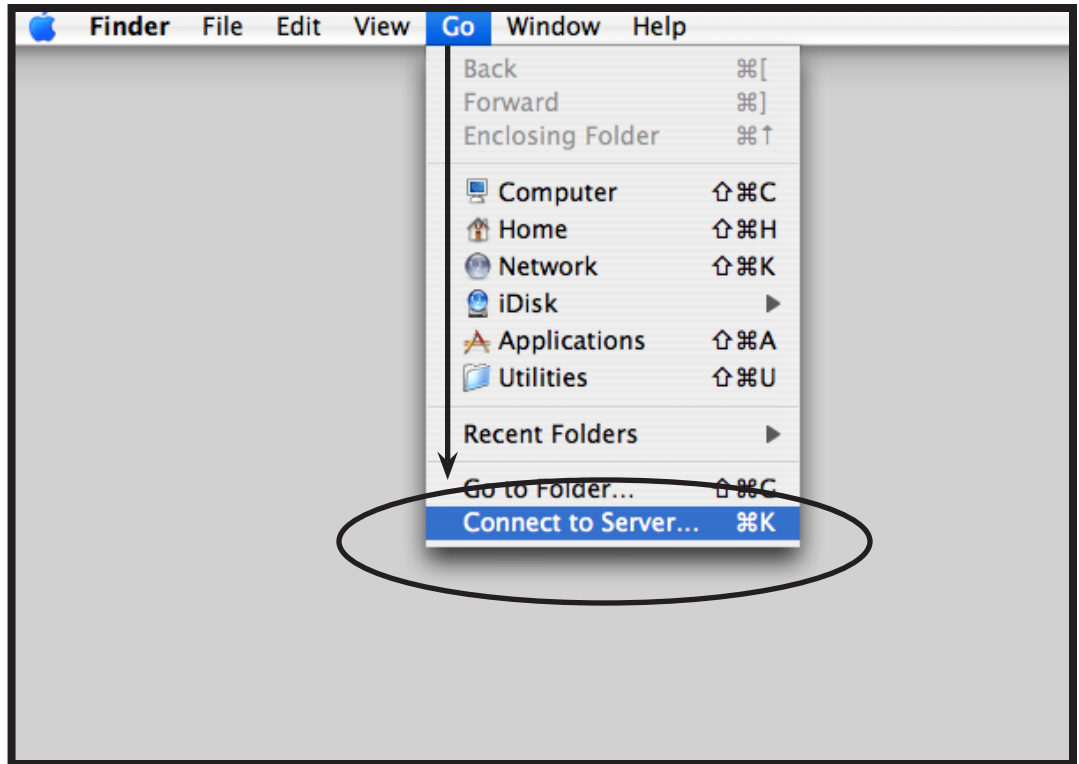
How to Map a Network Drive

1. To map a network drive, open up My Computer and click on Tools.

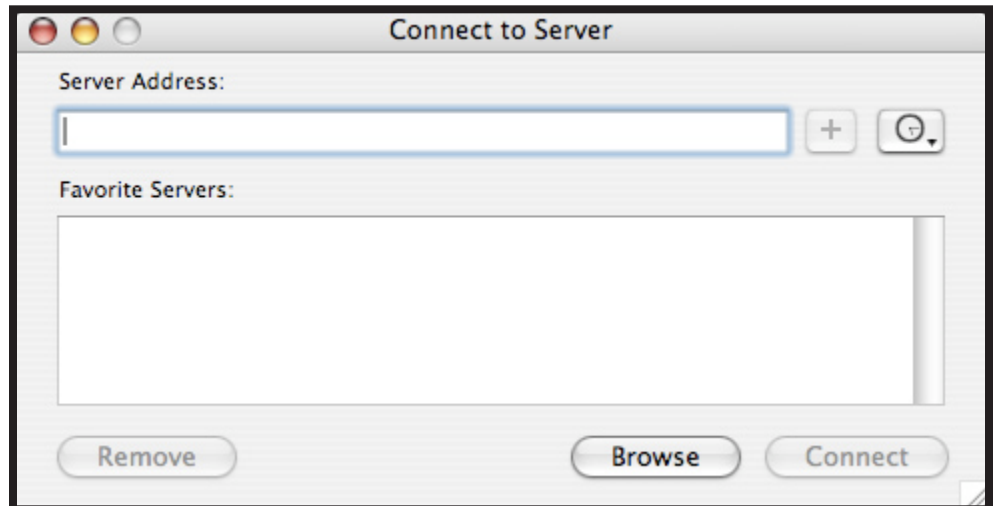


Map a Network Drive in OS X

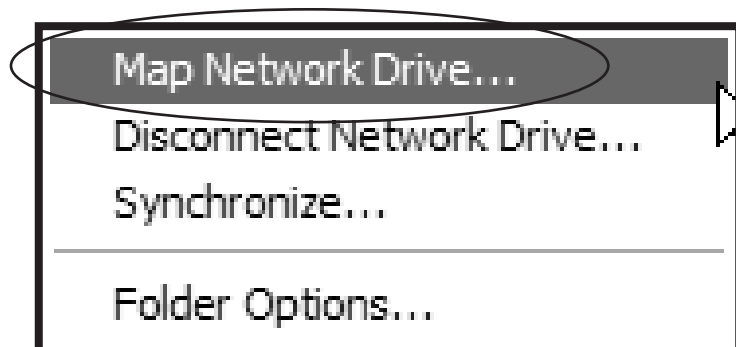
1. In Mac OS X, click on **Go** and select **Connect to Server**.



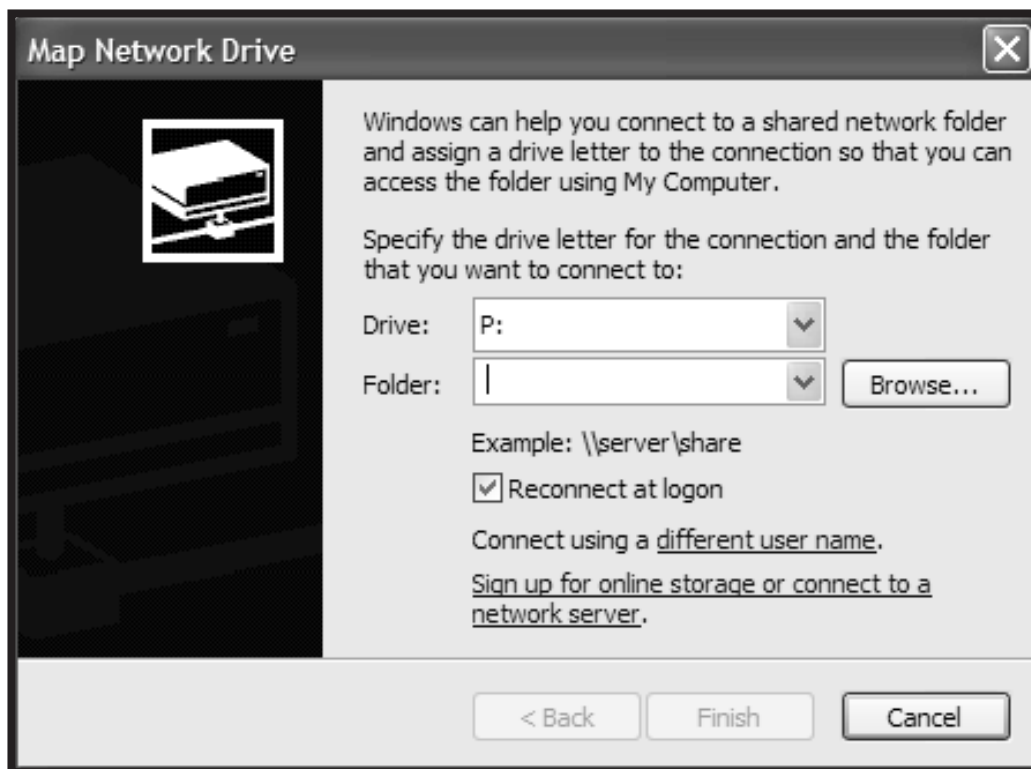
2. When the **Connect to Server** window appears, enter in the server name and share name (smb://server-name/sharename or smb://IpAddress/sharename) to connect to the network drive. Click **Connect**.



2. Under Tools, click **Map Network Drive**.



3. In the **Map Network Drive wizard**, set the drive letter to an unused drive letter. Type in the folder location using the format of \\server\share.
4. Browse to the folder location, then click **Finish**. Your drive should appear in **My Computer**.



CONTACT INFORMATION

Voice: 325-0631

Email: helpdesk@msstate.edu

Web: www.its.msstate.edu